



**The Kentuckiana Regional Planning  
and Development Agency**  
*2016 Annual Report*



# The KIPDA 2016 Annual Report

---

## *Table of Contents*

Letter from the Executive Director.....	3
KIPDA Board Members.....	5
KIPDA Financial Summary.....	7
Public Administrative Services Division.....	9
Transportation Division.....	22
Social Services Division.....	32
KIPDA Staff.....	47



## *A Letter from our Executive Director, Jack F. Couch*



Kentucky's area development districts were created in the 1960s, to partner with local governments in providing a more efficient process in service delivery. In the early years, area development districts across Kentucky were mostly involved in planning programs, projects and initiatives that would better improve the quality of life for the region. KIPDA being one of fifteen regions in Kentucky actually began as the Louisville Metropolitan Comprehensive Transportation and Development Program (LMCTDP) on August 27, 1963 to satisfy the requirements of the Federal-Aid Highway Act of 1962. The Technical Advisory Committee (currently the Transportation Technical Coordinating Committee) was created to provide technical guidance and direction to the LMCTDP. The Transportation Policy Committee (TPC), composed of the policy makers represented on the Technical Advisory Committee, was formed to set transportation planning policies for the Louisville Urban Area.

In order to facilitate and coordinate other necessary urban planning efforts, the Falls of the Ohio Metropolitan Council of Governments (FOMCOG) was formed on September 29, 1966 to cover the urbanized area of Jefferson County, Kentucky and Clark and Floyd Counties, Indiana. FOMCOG was particularly active in administering the planning programs sponsored by the United States Department of Housing and Urban Development (USDHUD).

In October, 1971 the Jefferson Area Development District (JADD) was formed at the insistence of the Kentucky Program Development Office (now the Department for Local Government) to provide regional planning coordination and technical assistance to the member counties. The JADD membership included Jefferson, Bullitt, Henry, Oldham, Shelby, Spencer, and Trimble Counties.

In the spring of 1973, negotiations between the Kentucky Department of Transportation and the FOMCOG resulted in a shift of the LMCTDP from a state responsibility to a FOMCOG responsibility. It was agreed by both parties that urban transportation planning was more properly the responsibility of a local planning organization and that close cooperation and coordination was needed between urban transportation planning and other urban planning activities. Also during the spring of 1973, the United States Department of Housing and Urban Development notified both the FOMCOG and the JADD that it would not support the duplicate programs of the two agencies with 701 Comprehensive Planning Assistance Funds beyond FY 1973. The JADD and FOMCOG merged into the Kentuckiana Regional Planning and Development Agency (KIPDA) on July 11, 1973 with final legal approval granted on November 1, 1973.

On the federal level, the Environmental Protection Agency (EPA) has designated KIPDA as the area EPA-208 planning agency. The United States Department of Transportation (USDOT) has certified KIPDA as adequately performing the requirements of a cooperative, continuing and comprehensive transportation planning program. The Office of Management and Budget (OMB) recognizes KIPDA as the Metropolitan/Regional Clearinghouse. Also the U.S. Department of Health and Welfare recognizes KIPDA as the Area Agency on Aging & Independent Living (AAAIL) and through a partnership with Kentucky's Cabinet for Health & Family Services, is responsible for service delivery for a host of aging and disabilities programs/services for the region. Finally, the USDHUD



recognizes KIPDA as the metropolitan planning agency for the Louisville Urbanized Area.

From our beginnings in 1963, KIPDA has adjusted in transitioning to the needs of our region as we fill the once void link between local, state and federal government and agencies. As we look back and witness the successes of regionalism, KIPDA looks forward to continuing this proven partnership that has greatly improved the quality of life for our citizens. This success is recognized by the team of KIPDA staff as we salute current and past partners of our local elected officials, Kentucky and Indiana General Assemblies, Offices of the Governor, and the United States Congress. Thank you for allowing us at KIPDA to continue as your partners as we strive to further improve the quality of life for us all.

Thank you,

Jack F. Couch  
Executive Director  
KIPDA

---

### *A Letter from our Board Chair, The Honorable Jerry Powell*



**R**eflecting back on this past year as Chairman of the Kentuckiana Regional Planning & Development Agency, I realize how quickly things that affect our daily lives are changing. The leadership of city and county governments in the nine county region represented by KIPDA, face the challenge of being proactive and the need to move forward.

KIPDA takes the challenge and helps determine the results for the citizens in our Kentuckiana area. The hard work of Executive Director Jack Couch, the Board Committee Chairs and dedicated KIPDA staff make it all possible. Whenever calls are made or emails are sent with questions or concerns, the KIPDA staff articulately answers each one with help quickly on the way. Everyone is on board with the goal of helping our communities and citizens to have a better future. KIPDA's membership and hard working staff make attaining this goal possible.

Serving as Chairman has been an honor and a privilege, but would have not been possible without the help of the Board and staff at KIPDA. As we look to the future we are sure to face challenges and obstacles, but I feel confident that we as a group can meet them with confidence and success.

The Honorable Jerry Powell  
KIPDA Board Chair  
Trimble County Judge/Executive

# 2016 KIPDA Board Officers



**The Honorable  
Jack Coffman**  
Vice Chairman  
President, Clark  
County Board of  
Commissioners



**The Honorable  
Bill Dieruf**  
Secretary/Treasurer  
Mayor of Jeffersontown



**The Honorable  
Bernard Bowling, Jr.**  
2015 Chairman  
City Council, St. Matthews

## KIPDA Board Members

---

### Bullitt County, Kentucky

**The Honorable Melanie Roberts**  
Bullitt County Judge/Executive

**Ms. Debby Mobley**  
Truck America Training, LLC

---

### Clark County, Indiana

**The Honorable Robert Hall**  
Mayor of Charlestown

**The Honorable Bob Polston**  
President, Clarksville Town Board

**The Honorable Jack Coffman**  
President, Clark County Board of Commissioners

**The Honorable Michael Moore**  
Mayor of Jeffersonville

---

### Floyd County, Indiana

**The Honorable Jeff Gahan**  
Mayor of New Albany

**The Honorable Mark Seabrook**  
President, Floyd County Commissioners

## Henry County, Kentucky

**The Honorable John Logan Brent**  
Henry County Judge/Executive

**Mr. Jody Rucker**  
Planning and Zoning Administrator, Henry County

---

## Jefferson County, Kentucky

**The Honorable Greg Fischer**  
Mayor of Louisville

**The Honorable Bernard Bowling, Jr.**  
City Council, St. Matthews

**The Honorable Bill Dieruf**  
Mayor of Jeffersontown

**The Honorable Sherry Connor**  
Mayor of Shively

---

## Jefferson League of Cities

**The Honorable Byron Chapman**  
Mayor of Middletown

---

## Minority-At-Large

**Val Shirley**  
Supervisor, Shelby County Solid Waste

---

## Oldham County, Kentucky

**The Honorable David Voegelé**  
Oldham County Judge/Executive

**The Honorable John Black**  
Oldham County Deputy Judge/Executive

---

## Shelby County, Kentucky

**The Honorable Rob Rothenburger**  
Shelby County Judge/Executive

**The Honorable Tom Hardesty**  
Mayor of Shelbyville

---

## Spencer County, Kentucky

**The Honorable John Riley**  
Spencer County Judge/Executive

**The Honorable David Goodlet**  
Magistrate, Mt. Eden

---

## Trimble County, Kentucky

**The Honorable Jerry Powell**  
Trimble County Judge/Executive

**The Honorable Mr. David Scott**  
Magistrate, Trimble County

---

## KIPDA Legal Council

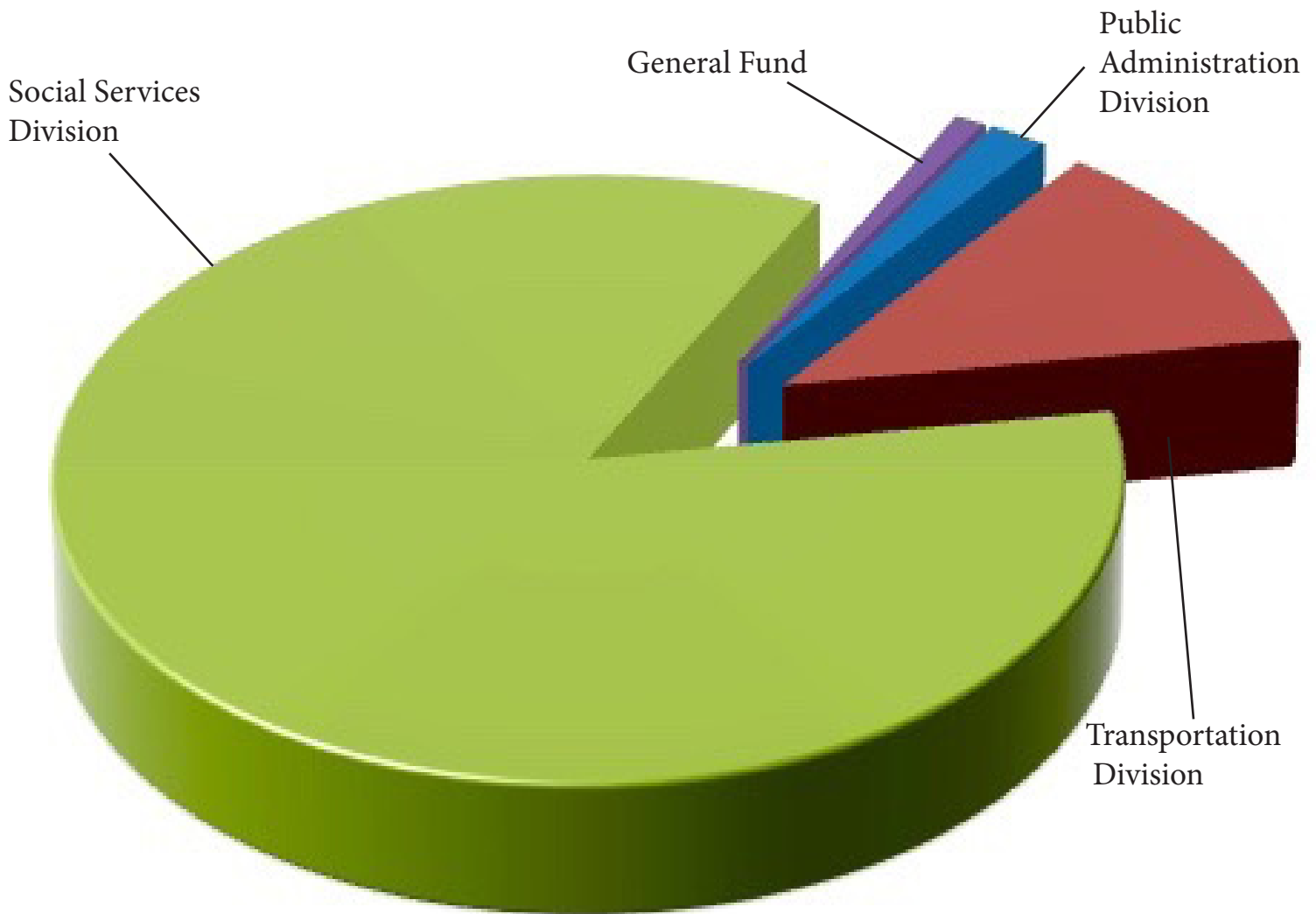
**Ms. Mitzi Wyrick**  
Wyatt, Tarrant & Combs

# KIPDA Financial Summary

The expenses and revenues displayed are based on Fiscal Year 2015. Fiscal Year 2016 has not yet been audited.

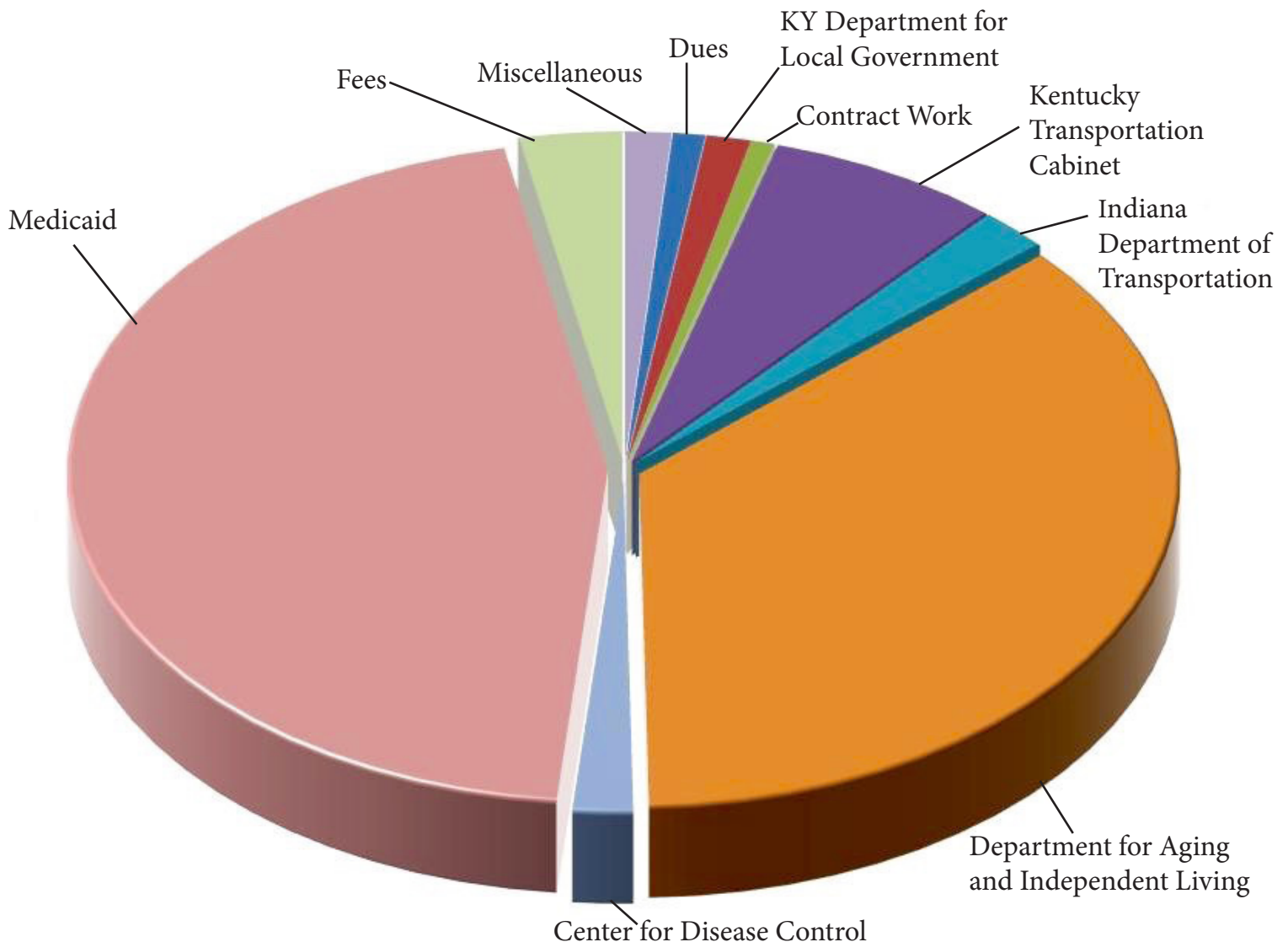
## Fiscal Year 2015 Expenses

Public Administration Division	\$464,625.60
Transportation Division	\$3,294,605.37
Social Services Division	\$21,056,777.31
General Fund	\$70,481.93
<b>Total</b>	<b>\$24,886,490.20</b>



## Fiscal Year 2015 Revenues

Dues	\$244,568.00
Kentucky Department for Local Government	\$338,672.75
Contract Work	\$169,027.02
Kentucky Transportation Cabinet	\$1,774,357.80
Indiana Department of Transportation	\$515,792.00
Department for Aging and Independent Living	\$9,174,271.37
Center for Disease Control	\$462,703.61
Medicaid	\$11,897,670.06
Fees	\$849,902.27
Miscellaneous	\$139,203.50
<b>Total</b>	<b>\$25,566,168.38</b>





# Public Administration Services Division

## **PAS Division Mission:**

*KIPDA maintains a Public Administration Services Division that provides technical assistance to governmental members of the seven Kentucky Counties. The Division is funded through State Joint Funding Administration Funds (JFA). The major goal of the JFA is to bring miscellaneous federal and state grants benefiting the region under a common administrative and planning umbrella.*

Over the course of 2016, the Public Administration Division has continued assisting local governments and water and wastewater utilities in the region through planning, grant writing and grant administration. PAS completed the annual update to the Region's Comprehensive Economic Development Strategy (CEDS) and received FEMA approval for the KIPDA Regional Hazard Mitigation Plan that will keep local municipalities eligible for FEMA funding. PAS also successfully submitted a Historic Commercial District nomination for the City of New Castle which was approved by the National Register of

Historic Places in Washington D.C. During the past year PAS staff have written grant applications from the following funding sources: FEMA, Department of Homeland Security, Land and Water Conservation Funds and HUD's Community Development Block Grant program. The Division remains proactive in exploring ways to help the citizens and local governments in the KIPDA region.

## **Regional Planning Council**



The KIPDA Regional Planning Council (RPC) was formed to provide a means and forum for the seven Kentucky counties within the KIPDA region (Bullitt, Henry, Jefferson, Oldham, Shelby, Spencer & Trimble) to discuss planning activities. Under the direction of KIPDA staff, individuals and local governments participate in the identification, evaluation and recommendation of regional planning needs. Shelby County Judge/Executive Rob Rothenburger (left) served as the RPC Chairperson for 2016.

The Council works directly with KIPDA staff in establishing needs, projects and recommendations for the region on a regional basis, not an individual county basis. The RPC's efforts are an attempt to comply with the regional planning provisions outlines KRS 147A.125.

The Council meetings are held quarterly on the second Tuesday of the first of the month of each quarter of the calendar year (January, April, July and October).

## **2016:**

Trimble County Planning and Zoning Implementation  
Louisville Metro Comprehensive Plan Update  
KIPDA Bike/Pedestrian Data Collection  
Planning Commissioners Training

## Regional Water Management Council

The KIPDA Regional Water Management Council is an advisory group to the KIPDA Board of Directors. The 2016 Council is comprised of 25 members representing all seven Kentucky KIPDA counties. Russ Rose of the Oldham County Water District (right) served as Chairperson and Bullitt County Judge Executive, Melanie Roberts, served as Vice-Chairperson throughout the year of 2016.

In October of 2016 the Regional Water Management Council approved the prioritization of 49 water projects and 20 wastewater projects. The prioritization highlights projects to seek funding and allows State and Federal legislators to see the needs of their communities. Below is a listing of the top projects in each county.



### *Drinking Water Rankings:*

County	Applicant	Project Title	Estimated Cost	Regional Rank
Henry	City of New Castle	New Castle Water Main Replacement (South Main St. - KY 421)	\$210,000	1
Oldham	Louisville Water Company	Halls Hill Road Extension	\$360,000	2
Shelby	Shelbyville Municipal Water	24 Inch Transmission Main 55 to 53	\$4,936,500	3
Spencer	City of Taylorsville	Possum Ridge Water Tank & Pump Station Replacement	\$1,420,000	4
Bullitt	Louisville Water Company	Plenmar Drive 4-Inch Water Main Extension	\$184,000	5
Trimble	City of Milton	System Reliability Upgrades	\$480,000	6
Jefferson	Louisville Water Company	Lead Service Renewals	\$3,500,000	7

### *Clean Water Rankings:*

County	WRIS	Project Title	Estimated Cost	Regional Rank
Henry	City of New Castle	Phase 1 Sewer System Rehabilitation Project	\$680,000	1
Oldham	La Grange Utilities Commission	I-71 Interceptor Sewer Replacement	\$694,000	2
Shelby	Shelbyville Municipal Water & Sewer	Shelby County Cooperative Extension Office	\$469,263	3
Trimble	City of Bedford	Wastewater System Improvements	\$1,500,000	4
Bullitt	City of Shepherdsville	Shepherdsville - Blue Lick Storm Water Project	\$1,996,250	5
Jefferson	Louisville & Jefferson County Metropolitan Sewer District	Hite Creek WTP Expansion	\$14,389,777	6



## Comprehensive Planning & Zoning Regulations

Comprehensive planning is a tool used by communities to establish guidelines for the future growth of their community. KIPDA works with local planning commissions to update comprehensive plans for their jurisdiction as needed. Zoning is the primary tool jurisdictions use to help implement the comprehensive plan. Zoning regulations typically govern the type of land uses permitted and how they can be configured on the land. Most jurisdictions also have subdivision or development regulations that provide further guidance for the development of land. KIPDA works with local jurisdictions to revise their zoning codes and subdivision regulations.

### Henry County Comprehensive Plan Update

Henry County, with assistance from KIPDA, is currently updating its Comprehensive Plan, a long-range 20-year plan that sets the framework for the physical development of the county. This plan is designed as a tool to be used by all decision makers, both public and private. In so doing, the Henry County Comprehensive Plan is an update and reflects the expressed desires of the community and serves as a guide to decision making (i.e. zone change and development plan).

### Trimble County Comprehensive Plan

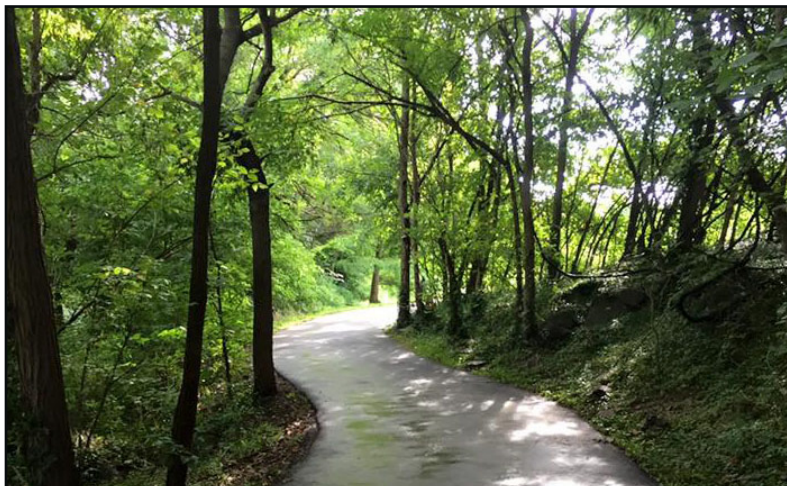
In 2016, Trimble County Fiscal Court entered into an agreement with the City of Milton and the City of Bedford to create a joint-planning commission to serve all residents of Trimble County. The joint planning unit was formed to:

- A.  
To secure the maximum economical, physical and social welfare of the City and County and their citizens through the thoughtful and planned use and development of land, buildings, thoroughfares and public utilities.
- B.  
To encourage the establishment of planning programs, the provision of facilities and personnel therefor, the study of needs of the affected areas in the field of planning and implementation and enforcement of all regulations lawfully established and promulgated pursuant to the provisions of said Chapter 100 of the Kentucky Revised Statutes.
- C.  
To encourage cooperation between the City and County and the citizens and of officials thereof;

KIPDA is leading the Comprehensive Planning process for Trimble County. A completed plan should be available in 2017.



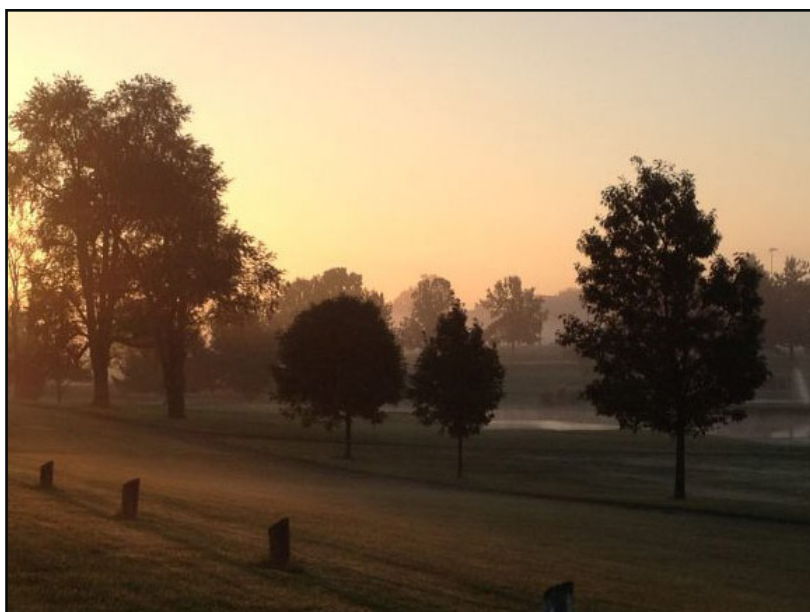
## Recreational Trails Program (RTP)



The Recreational Trails Program (RTP) is funded by the Federal Highway Administration (FHWA). It can be used to provide assistance for acquisition of easements, development and/or maintenance of recreational trails and trailhead facilities for both motorized and non-motorized use. The Recreational Trails Program benefits communities and enhances quality of life.

### Clear Creek Greenway Phase II

The Clear Creek Phase II will be approximately 1.5 - 2 miles in distance and will be a continuation of concrete and asphalt construction. The trail will follow Clear Creek upstream to the Lake Shelby Campground area. There will also be points of interest along the way such as the old City of Shelbyville water pumping station, Shelbyville Country Club, and it will connect to several subdivisions as well. The trail will be used for hiking, jogging, fishing, roller blading and accessible for wheelchairs and canoeists. There are no historic building sites along the trail route due to it being within the flood plain.



RTP Grant Request = **\$100,000**  
Applicant's Match = \$100,000  
Total Project Cost = \$200,000

## Hazard Mitigation

KIPDA completed a full update for a FEMA approved 2016 KIPDA Regional Hazard Mitigation Plan. By securing \$75,000 in federal funding for the 5-year update to the plan, it covers Bullitt, Henry, Oldham, Shelby, Spencer, and Trimble counties and their 24 incorporated cities. The KIPDA Regional Hazard Mitigation Plan is a comprehensive hazard mitigation plan required by FEMA for protecting our communities from natural disasters by using mitigation techniques to lessen the severity of disasters and increase resiliency. The plan update is required by FEMA every 5 years. KIPDA is currently on its 3rd iteration of the planning cycle. In order for a community to receive funding from FEMA for certain grants, every community must have a plan in place.



As of date, the updated plan has been approved by FEMA, with a new risk assessment and new mitigation sections that discuss strategies for dealing with disaster profiles. The KIPDA Regional Hazard Mitigation Committee met with each county's Emergency Management Director, conducted regional meetings, and held county wide meetings that solicited mitigation ideas from the community at large all for the sake of community participation and crucial information. The stakeholders for this plan include a diverse group of participants from emergency management, elected officials, police, fire, search and rescue, private companies, citizens, and more.

Funding is through the Pre-Disaster Mitigation Grant Program (PDM) and the Flood Mitigation Assistance Grant Program (FMA), the latter awarded to the Shelby County Fiscal Court as project sponsor. The plan is required in order for communities to remain eligible for hazard mitigation grant funding through FEMA.



---

## *FEMA Grants*

Besides Hazard Mitigation Planning, KIPDA helps counties and local governments apply for FEMA grants and helps local municipalities navigate the application process. KIPDA helped with Federal Declaration 4239 applications for Spencer and Trimble Counties. Spencer County applied for \$400,000 to repair and upgrade Spears Drive in Taylorsville, and the City of Bedford in Trimble County applied for a gas detection unit for their water treatment facility. KIPDA also applied on behalf of Bullitt, Henry, Oldham, Shelby, Spencer, and Trimble Counties to conduct a debris removal study under the Pre-Disaster Mitigation Grant. Upcoming grant opportunities include THIRA, or threat and hazard identification and risk assessment, future HMGP, PDM, and FMA Grants.



---

## *Municipal Clerks*

The KIPDA Municipal Clerks Association serves as the regional chapter of the Kentucky Municipal Clerks Association. The Association strives to foster personal job support, to secure support of local officials, and to develop an information network among clerks within the KIPDA region. The KIPDA Municipal Clerks Association meets monthly with membership to the Association open to any person who serves as a City Clerk or Assistant City Clerk within the KIPDA region. The KIPDA Municipal Clerks Association routinely invites guest speakers to the monthly meeting to present on pertinent topics.



## *Municipal Clerks Annual Conference*

The KIPDA Municipal Clerks Association hosted the Annual Kentucky Municipal Clerks Association (KMCA) Conference in Jeffersontown, Kentucky. The event, which was open to the 420 city clerks in Kentucky, proved to be a great training ground for city clerks of all levels and a great place to network. With ample donations from the City of Louisville, Jeffersontown, St. Matthews, Eminence, Simpsonville, Shelbyville, Bedford, New Castle, Douglas Hills, Pleasureville, and many other cities in the KIPDA region, and with countless hours of volunteering from the KIPDA clerks, the annual conference was a huge success! Community partnerships from Rumpke to Kentucky League of Cities all engaged in the process and training.



## *Community Development Block Grants*

KIPDA secured \$500,000 in federal funding for the City of Shelbyville to help eliminate slum/blight in the community. The City of Shelbyville was awarded a Community Development Block Grant (CDBG) to purchase the existing Blue Gables Motel and reuse it for commercial space as part of Shelbyville's downtown revitalization efforts. The Shelbyville Preservation Group has made of the renovations and started leasing units in the Fall of 2016.





KIPDA secured \$500,000 in federal funding for the Shelby County Fiscal Court to assist in the investment of the Diageo Distillery. The Shelby County Fiscal Court was awarded a Community Development Block Grant (CDBG) to provide for the collection and treatment of the wastewater discharge, a new pump station and force main for the newly constructed Diageo Distillery. Diageo is building a 1.8 million proof gallons distillery in Shelby County. The \$115 million investment will create approximately 30 new jobs.



## Newsletter

In an effort to increase community outreach, PAS, in coordination with the Social Services and Transportation Divisions, publishes an agency newsletter which is distributed digitally at the beginning of each month, both via email and through our website.

The newsletter captures activities within both KIPDA and the region, while informing readers of upcoming events and funding opportunities. Each month, KIPDA highlights local and national accomplishments as well and serves as a great resource for each community.

SEE WHAT EXCITING THINGS ARE HAPPENING IN YOUR COMMUNITY!



**KIPDA Newsletter October 2016**

11520 Commonwealth Drive  
Louisville, KY 40299  
[WWW.KIPDA.ORG](http://WWW.KIPDA.ORG)  
(502) 266-6084 Fax (502) 266-5047 ky tdd 1-800-648-6056

### MONTHLY MEETING NOTICE

Meeting Date Time Location

## Land and Water Conservation Fund

KIPDA assisted two communities applying for the Land and Water Conservation Fund Grant during the 2016 funding cycle; Spencer and Bullitt counties.

The Land and Water Conservation Fund (LWCF) is the federal program to conserve irreplaceable lands and improve outdoor recreation opportunities throughout the nation. The program works in partnership with state and local efforts to acquire and protect inholdings and expansions in our national parks, national wildlife refuges, national forests, national trails, and Bureau of Land Management (BLM) areas. LWCF grants to states in order to support the acquisition and development of state and local parks and recreational facilities.

### Spencer County Ray Jewell Lighting Phase I

LWCF \$39,763.50  
Applicant \$39,763.50  
Total Cost \$79,527.00



### Bullitt County YMCA

LWCF \$75,000  
Applicant \$204,555.00  
Total Cost \$279,555.00



## Kentucky Office of Homeland Security

The Kentucky Office of Homeland Security Grant Program accepted applications this summer for critical infrastructure projects, first responder equipment and communications equipment. KIPDA, on behalf of Trimble County Emergency Management and the Henry County Emergency Management, submitted applications for gas detection units to aid their firefighters in helping save lives.

In previous years, multiple counties throughout the KIPDA region have been awarded funds to better protect the lives of the citizens. KIPDA is proud to partner with each of its counties to make the communities safer and more resilient to disaster.





## Community Oriented Policing Services (COPS)

KIPDA worked directly with Shelby County Sheriff's Office in order to apply for grant funding to pay for a new hire officer to help police the community of Shelby County.

The Office of Community Oriented Policing Services (COPS Office), which hosts the grant, is a component within the U.S. Department of Justice dedicated to community policing by helping fund communities with policing needs.

The grant would have covered \$125,000 over a 3 year period to aid in funding for a new police officer. Shelby County is one of the fastest growing counties in the state. Although not selected this round, this is one of many services KIPDA is dedicated to helping counties apply for and maintain each year.



---

## City & County Job Descriptions & Postings

In 2016, KIPDA helped multiple cities in creating job descriptions that fit standard practices and were appropriate for each position. KIPDA tailored an accurate job posting for the City of Bedford and helped Seneca Gardens find City Clerks for their respective communities. KIPDA also helped other cities find appropriate staff for several positions.

---

## Salary Surveys

KIPDA helped multiple jurisdictions and municipalities with salary surveys this year, including the City of Seneca Gardens, Spencer County, Trimble County and the KIPDA Regional Water Management Council.

Salary surveys help determine fair and just compensation for workers, keep cities and counties competitive with the private and public markets, and provide better definition of worker roles. Being aware of market trends helps each municipality become more proactive to the market by keeping better quality employees and creating fewer turnovers in job positions.

---

## Trainings

KIPDA hosts multiple trainings a year for public officials and residents in the KIPDA region. This year, KIPDA hosted an Open Records and Open Meetings Act, which trained officials and the public on what the requirements for public records and meetings are according to Kentucky statutes. KIPDA also conducted training for Special Purpose Governmental Entities (SPGE) and how to be compliant with the new laws.

KIPDA's Regional Planning Council hosted training for over 30 participants on October 26, 2016 to meet the required continuing education requirement under House Bill 55. House Bill 55 states that each planning commissioner and board of adjustment members starting from their date of appointment are required to receive a minimum of eight (8) hours of continuing education within each period of two (2) consecutive calendar years. Tim Butler, AICP Attorney and Louisville Metro Planning and Design Services led the training which included topics on Making Defensible Decisions, Open Meetings/Open Records Law, AirBNB, Tiny Houses and Updating the Comprehensive Plan.





## *National Park Service (NPS) Grant to Save Odd Fellows Lodge*

KIPDA PAS staff wrote and submitted a grant to help save the historic African American Odd Fellows Lodge in New Castle, Kentucky. The grant was offered through the National Park Service (NPS) African American Civil Rights grant program, which aims to document, interpret, and preserve the sites and stories related to the African American struggle to gain equal rights as citizens in the 20th Century.

This collaborative grant effort demonstrates the partnerships between the City of New Castle, the nonprofit New Castle Main Street, Inc. and the African American chapter of Odd Fellows to help save and preserve this historic landmark. The roof of the structure collapsed in an icestorm in March, 2015. If awarded, the money received from the NPS will restore the building by rebuilding a second floor and adding HVAC, plumbing and electric systems to the newly renovated building.



## *New Castle Historic Commercial District Designation*

KIPDA PAS staff wrote and submitted a nomination to designate New Castle, KY as a historic commercial district on the National Register of Historic Places. The application was approved on August 5th, 2016 in Washington D.C. The buildings within the district will be better protected by being afforded protection from adverse effects of federally assisted projects; and through automatic inclusion in the State Register of Historic Places, protection from state actions. National Register listing also allows the owners of income-producing properties certain federal tax incentives for substantial rehabilitation according to standards set by the Department of the Interior. Recognition from the National Register validates the historical significance of the New Castle Historic Commercial District and acknowledges its historical commercial influence and overall importance within the Henry County community.





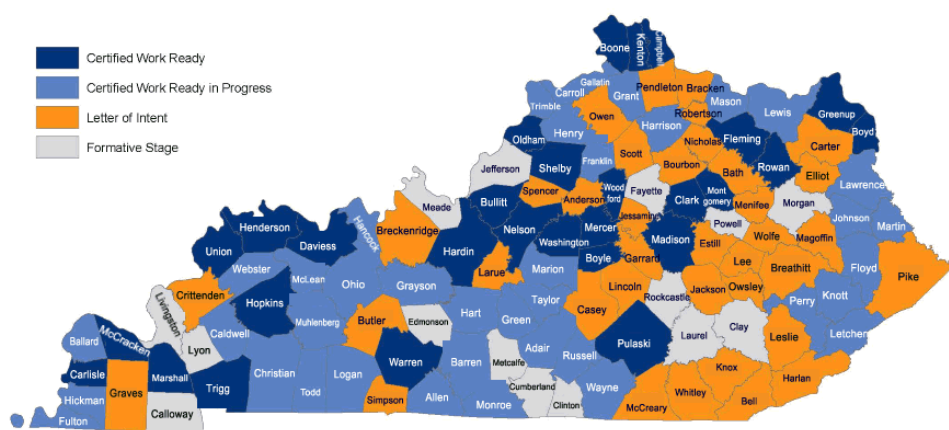
## Bullitt County Earns Work Ready Communities Certification

The Kentucky Education and Workforce Development announced on May 19, 2016 that Bullitt County has received the Work Ready Communities Certification. Bullitt County is one of only 29 Kentucky Counties that has earned this designation. Kentucky Work Ready Community certification is a measure of a county's workforce quality. It is an assurance to business and industry that the community is committed to providing the highly-skilled workforce required in today's competitive global economy.



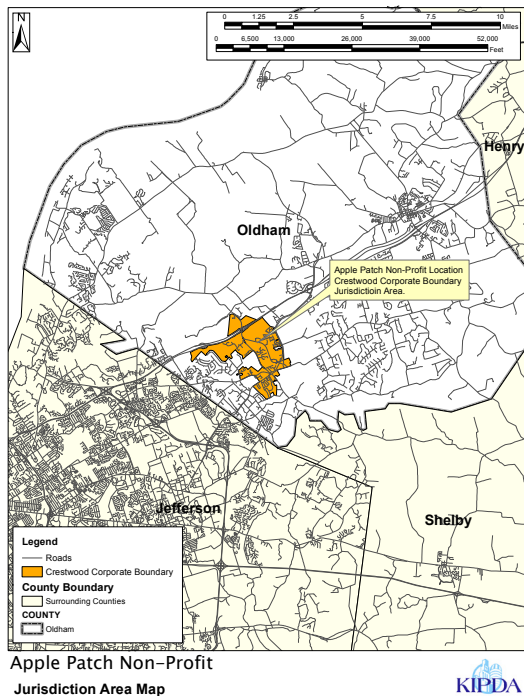
From L to R – Front Row: Angie Woodward, Bullitt County Work Ready Committee Member; Felicia Harper, KIPDA. Back Row: Melanie J. Roberts, Bullitt County Judge/Executive; Kurt Krug, Work Ready Review Panel Chair and KWIB member; Debby Mobley, Truck America Training; Hugh Haydon, KWIB chair, Rick Jordan, Director of Special Projects with the Education and Workforce Development Cabinet and Hal Heiner, Secretary of the Education and Workforce Development Cabinet.

To become certified, a county must gather local support and commitment and apply for the Work Ready Community designation. Counties have to meet criteria in six areas, including: high school graduation rates, National Career Readiness Certificate holders, demonstrated community commitment, educational attainment, soft-skills development and digital literacy.



May 19, 2016

# Geographic Information Systems



KIPDA GIS staff provided mapping and analysis for the KIPDA Hazard Mitigation Plan. Critical facilities, land use, population change, flood plains, faults, dam locations and karst areas were all mapped as base conditions for the plan. Dam failure, droughts, hailstorms, sinkholes, landslides, severe storms, winter storms, tornadoes, and forest fires were mapped to identify and quantify the effect these hazards have on our community and to plan for mitigation.

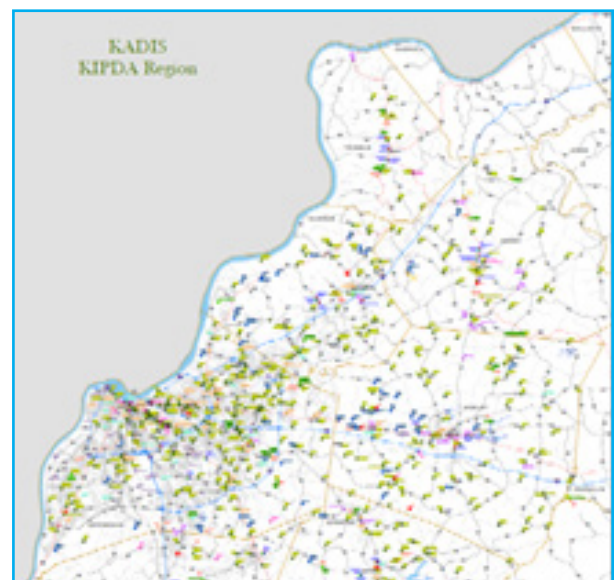
KIPDA staff continued to provide updated mapping of Magisterial Districts, Voter Precincts, and School Boards. Staff completed grant application mapping for various Community Development Block Grant projects like Apple Patch in Oldham County, and Land and Water Grants like Bullitt County's Shepherdsville Pool Renovation Project and Spencer County's Ray Jewell Park. GIS staff also completed maps to assist the Oddfellows lodge and several properties in New Castle in applying for status on the National Register of Historic Places. GIS staff also worked with PAS staff to compile a Regional Land Use Map for the KIPDA Kentucky counties as part of the Regional Planning Council's activities.

KIPDA GIS maintains several databases through the Water Resource Information System (WRIS) contract with the Kentucky Infrastructure Authority. As part of this year's contract, KIPDA GIS staff collected the location of manholes, hydrants and valves from Eminence Water and Wastewater, Bullitt County Sanitation District's Hunter's Hollow assets, and processed data from LaGrange Utilities and Oldham County Water District. KIPDA GIS staff also completed mapbooks for each system and assisted in updating the mapping for regional water and wastewater project profiles.

## Kentucky Agricultural Data Information System (KADIS)

The Kentucky Agricultural Data Information System (KADIS) project involved collecting and mapping agriculture related datasets for the KIPDA region for a statewide interactive web map.

Data sets include Farmer's Markets, Agriculture Processing Sites, Agriculture Service providers, Agriculture Industry, Animal related services, Auction houses, CSA, Distilleries including Wineries and Breweries, Fairgrounds, Farmers Selling Locally, Agricultural Institutions, KY Proud members, Recreational Agriculture, Transporters of Agricultural products, Equine related agriculture, and areas zoned for agriculture.





## Area Development Fund

The Area Development Fund Grant is awarded through the Area Development Districts for distribution to local governments within their region for selected capital improvement projects. The available funding varies annually dependent on the State budget and is distributed according to a funding formula approved by the KIPDA Board of Directors.

Area Development Fund				
	FY16		FY17	
County	Project	Amount	Project	Amount
Bullitt	Correction Center Air Unit	\$5,595.25	Med Car Purchase	\$6,158.25
Henry	Fire Department Turn Out Gear	\$5,595.25	Reserved	\$6,158.25
Metro Louisville	Siren Upgrade and Additions	\$33,571.50	Reserved	\$36,949.51
Oldham	Courthouse Square Boulevard Project	\$5,595.25 (\$11,311.44)	Courthouse Square Beautification Project	\$6,158.25
Shelby	Scanner/Copier/Plotter for GIS/GPS System	\$5,595.25	Waddy Fire Protection District - Communications Equipment Upgrade	\$6,158.25
Spencer	EMS Equipment	\$5,595.25 (\$17,200.86)	EMS Stryker Stair Chair	\$6,158.25
Trimble	Reserved	\$5,755.61	Mower for County Park	\$6,158.25 (\$11,913.86)
<b>Total</b>		<b>\$67,303.36</b> <b>(\$84,625.16)</b>		<b>\$73,899.00</b> <b>(\$79,654.61)</b>



# Transportation Division

## Metropolitan Transportation Planning

*KIPDA serves as the Metropolitan Planning Organization (MPO) for the Louisville/Jefferson County KY-IN urbanized area. A Metropolitan Planning Organization (MPO) is defined in Federal Transportation Legislation (23 USC 134(b) and 49 USC 5303(c)) as the designated local decision-making body that is responsible for carrying out the metropolitan transportation planning process. An MPO must be designated for each urban area with a population of more than 50,000 people (i.e., for each Urbanized Area (UZA) defined in the most recent decennial Census). The Louisville/Jefferson County KY-IN Metropolitan Planning Area (MPA) consists of the U.S. Census-defined Louisville Urbanized Area and the area projected to be urbanized by the year 2030. For administrative purposes, the MPA includes Bullitt, Jefferson and Oldham counties in Kentucky and Clark and Floyd counties in Indiana as well as 1/10th of a square mile in Harrison County, Indiana*

One of the responsibilities of the Transportation Division of KIPDA is to support and facilitate operation of the Metropolitan Planning Organization for the Louisville/Jefferson County KY-IN Urbanized Area. The Metropolitan Planning Organization is defined in the Federal Transportation Legislation as the designated local decision-making body that is responsible for carrying out the metropolitan planning process. The Metropolitan Planning Area (MPA) includes the counties of Bullitt, Jefferson and Oldham, in Kentucky, and Clark and Floyd in Indiana, and the MPO is responsible for implementing the “Fixing America’s Surface Transportation Act,” or FAST Act. This five year, fully-funded bill is the first federal law in more than a decade to provide long-term funding certainty for surface transportation infrastructure planning and investment.

The FAST Act authorizes \$305 billion over fiscal years 2016 through 2020 for highway, highway and motor vehicle safety, public transportation, motor carrier safety, hazardous materials safety, rail, and research, technology, and statistics programs. The FAST Act maintains a focus on safety, keeps intact the established structure of the

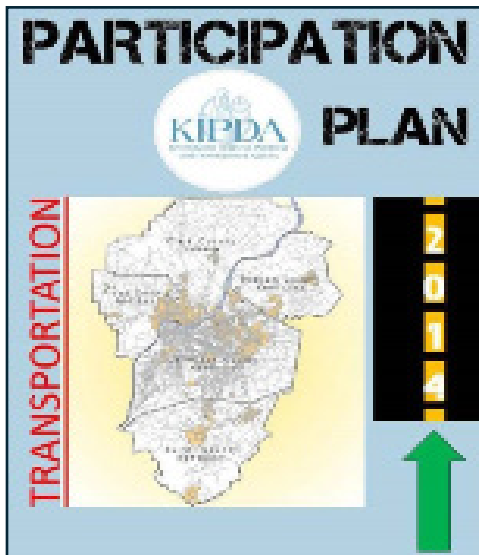
various highway-related programs we manage, continues efforts to streamline project delivery and, for the first time, provides a dedicated source of federal dollars for freight projects. With the enactment of the FAST Act, states and local governments are now moving forward with critical transportation projects with the confidence that they will have a federal partner over the long term.

The logo for the FAST Act, featuring the word "FAST" in large, bold, red capital letters and the word "ACT" in large, bold, dark blue capital letters below it.

In 2016, The KIPDA Transportation Division and the MPO successfully updated and adopted several documents and processes critical to the overall transportation planning process. Some of the products were:

## Products

### *KIPDA's Participation Plan Review (2014 Plan Adoption)*

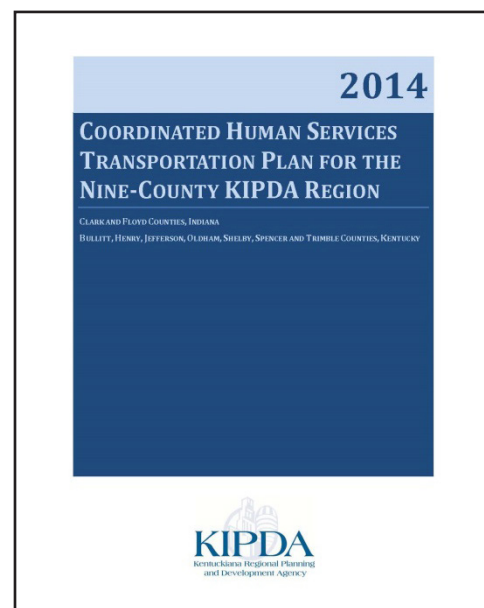


The Transportation Policy Committee (TPC) heard the annual report concerning the participation effectiveness for the region at their May meeting. GIS analyses including visual aids and maps were used to depict the geographic distribution of participation activities, comments received, and other pertinent information. Another GIS analysis highlighted participation activities relative to Title VI and Environmental Justice populations and other populations of concern. Analysis of the KIPDA website and social media usage, including data tracking to determine how many views were seen on the KIPDA website and social media pages was reported. A community-wide participation and outreach satisfaction survey was conducted and the results were presented during the TPC meeting. Results from annual participation summaries, including disposition of comments, were also presented. The TPC voted to approve the review of the Participation Plan on May 26, 2016.

### *The Coordinated Human Services Transportation Plan (CHSTP)*

The CHSTP for the Nine-County KIPDA Region is a plan that seeks to enhance mobility and access to transportation services for older adults and persons with disabilities. It was adopted in June 2014, and a bi-annual review was conducted this year to make minor updates to the plan and to evaluate the progress made towards reaching the plan's goals.

The review findings indicated that 3 of the 6 goals were adequately addressed through 19 new projects over the last 2 years. A total of 15 agencies in the KIPDA region received Federal Section 5310 funding for 19 total programs which: purchased/replaced 21 accessible vehicles, purchased/replaced 10 non-modified vehicles, and provided work trips to TARC 3 eligible consumers who live/work outside of the service area. The FAST Act also authorized a pilot program, the Rides to Wellness Initiative, to help finance innovative projects for the transportation disadvantaged. This bi-annual review was presented to and approved by both the TTCC and TPC in September.



### *Transportation Alternative Program (TAP) Funding*

The TAP funding program was created with the federal transportation legislation MAP-21, and combines elements of the former Transportation Enhancement (TE) and the Safe Routes to Schools (SRTS) programs. With the new legislation, urbanized areas now receive a sub-allocation which may be used on projects selected by the MPO. A competitive and transparent selection process must be in place before the funds can be used, and that process for the MPO was approved by the TPC in September 2015. A call for projects was subsequently issued, and funds were awarded early in 2016 to several projects in both Kentucky and Indiana.

## *Roadway Functional Classification Update*

KIPDA Transportation staff, in cooperation with local agencies, assisted the Kentucky Transportation Cabinet with an update of roadway functional classifications in Bullitt, Jefferson, Oldham, and Shelby counties. The update was made necessary by changes to the 2010 Louisville/Jefferson County, KY-IN Census Urbanized Area and 2010 Louisville/Jefferson County, KY-IN FHWA Urban Area boundaries, as well as by changes to the official functional classification scheme in the most recent edition of Highway Functional Classification: Concepts, Criteria, and Procedures. Staff is working to complete a similar functional classification update for roadways in Clark and Floyd counties in Indiana.

## *Title VI and Environmental Justice Information*

KIPDA Transportation staff has been working to provide information and data for use by local agencies in their Title VI and Environmental Justice (EJ) related activities. The information is available from the 2010-2014 American Community Survey (ACS) and includes:

- Minority Persons
- Persons with Low-Income
- Older Persons
- Persons with Disabilities
- Persons with Limited English Proficiency (LEP)
- Persons by Gender
- National Origin
- Persons with Low-Literacy
- Zero-Vehicle Households

The information is available for several levels of geography, down to the Census Block Group. The data has many Title VI and EJ-related uses, including:

- EJ analyses
- Title VI Implementation Plans
- Public Involvement efforts
- Socioeconomic studies
- Community Impact Analyses
- ADA Transition Plans
- LEP analyses





## Sidewalk Inventory

KIPDA GIS and Transportation planning staff have been conducting a comprehensive inventory of bicycle and pedestrian facilities in the five urbanized counties. Staff began collecting data in April and expects to be complete by November. Sidewalks, crosswalks, multi-use paths, bike lanes, sharrows, and even a few bike boxes are being inventoried using a Digital Mileage Instrument (DMI) and the milepoints from the State Route Logs.

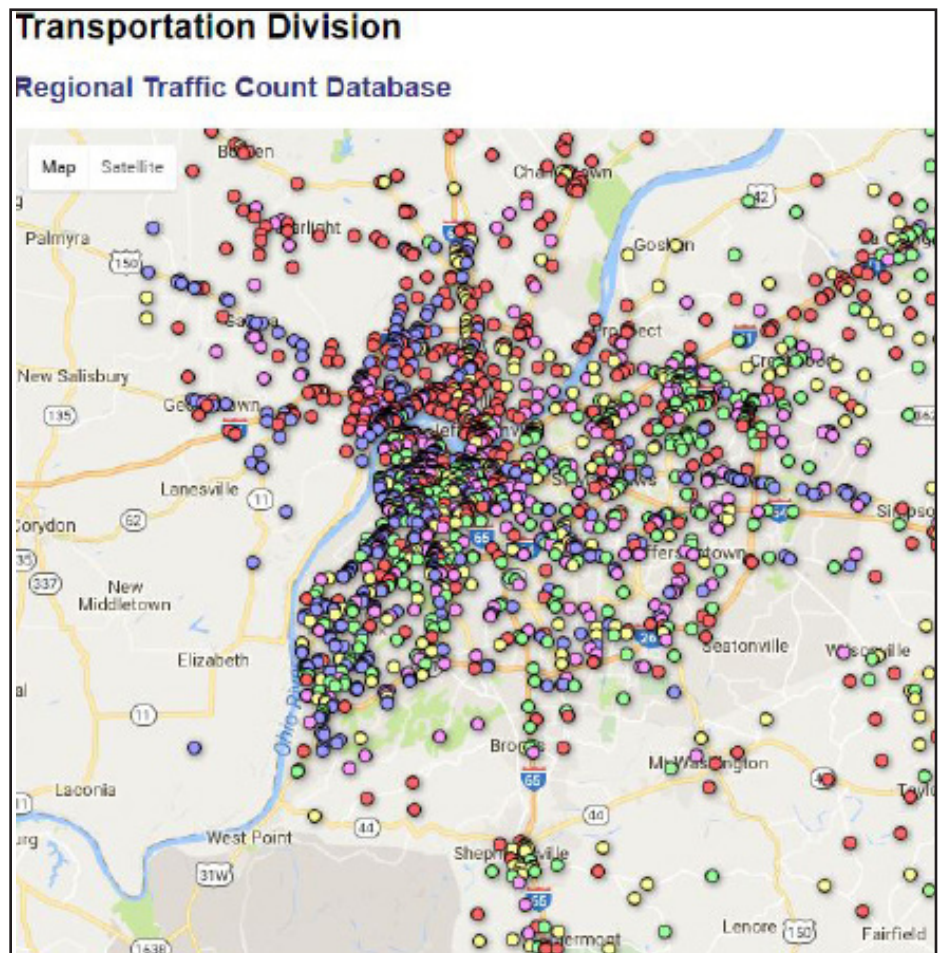
The process was basically the same that KIPDA staff has been using for sidewalk data collection requested by KYTC in rural cities in the Area Development District over the past two years. The data will be used to support KIPDA's Transportation Performance Measures, to improve bicycle and pedestrian transportation safety and accessibility, and to identify gaps in connectivity. The data will also be made available to member agencies once the inventory is complete.



## Traffic Count Database

The regional traffic count page on the KIPDA website underwent a major update in 2016. Nearly 1,000 count stations were added or updated in the past year, which includes all of KYTC's counts from 2015 as well as updated INDOT counts from 2016. Hundreds of new counts from Louisville Metro Public Works are included as well. Some of the new additions include ramps on Kentucky interstate highways.

There are now over 4,700 count stations in the database region-wide, and more will be added and updated as they are received. Based on feedback received by KIPDA staff, this page is used by staff members of the LPA's around the KIPDA Region, by developers, and by members of the general public. This page provides them with a valuable resource that is available to them on a 24/7 basis whenever they are in need of traffic count information.



## Interactive Mapping

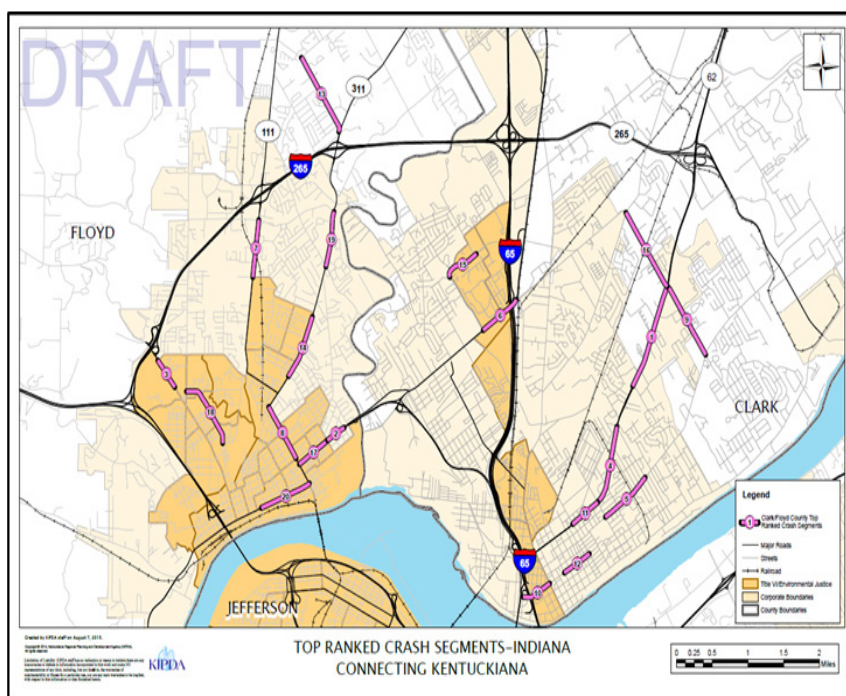


Interactive maps depicting the projects in the Metropolitan Transportation Plan (MTP) and the Transportation Improvement Program (TIP) are now available on the KIPDA website [www.kipda.org](http://www.kipda.org). This online resource provides information on all projects developed through the metropolitan transportation planning process. The MTP map will show the projects listed in the Horizon 2035 Transportation Plan, which are projects that are currently being considered for implementation between now and the year 2035. The TIP map will show projects that are currently represented in the 2015-2018 TIP. The projects from that document are projects that have specific funding programmed for them, and which are considered “committed” projects. Citizens will be able to easily find projects proposed for their neighborhood or for other areas in which they have an interest. The MTP is updated every four years, and the TIP is generally updated every two years, and it is also possible that either of those documents could be amended or modified in some way in between the updates. The maps will be periodically updated to reflect any of those changes.

## Connecting Kentuckiana

The next update to the MTP will be called Connecting Kentuckiana, and will have a horizon year of 2040. With the current focus on performance-based planning, many elements of the transportation planning process are being revised and adapted for the update. The use and analysis of data will be a major component of the effort, and KIPDA staff, the TTCC, and the TPC have collaborated in 2016 to produce a variety of tools, processes and approaches that will shape this effort.

- A.
- A method of analyzing crash data was developed that improves on the way that incidents on rural and urban roadways might better compete for priority.
- B.
- The designation of Focus Areas, where a combination of transportation-related issues exist, was accomplished.
- C.
- A Project Management Process, including application for funding, quarterly tracking, and more strict fiscal and schedule management was adopted.



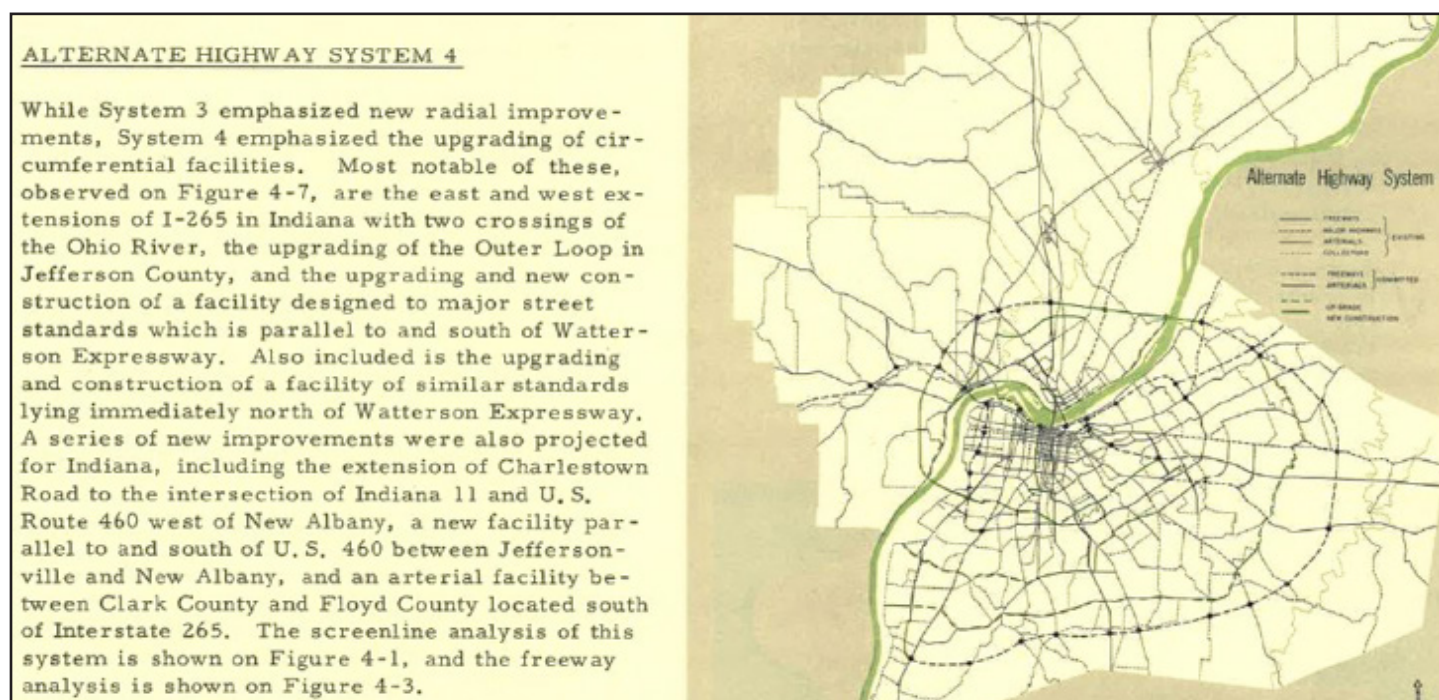


## Kentucky-Indiana Transportation Excellence Award

2015 was the inaugural year for the Kentucky-Indiana Transportation Excellence (KITE) Award, and the 21st Century Parks Project was the winner of the award presented at the Transportation Policy Committee Meeting and the Annual KIPDA luncheon on November 24, 2015. The award provides an opportunity to recognize and celebrate projects that demonstrate outstanding transportation planning and implementation practices performed by planners, engineers, and decision-makers in the KIPDA Louisville Urbanized Area and within the context of the metropolitan planning organization (MPO) planning process conducted by KIPDA. 2016 saw several excellent nominees for transportation projects in our region, and the process is underway to select a winner for 2016.

## Projects

In addition to the plans and projects KIPDA staff create and update, there have been other notable and exciting transportation projects constructed and/or implemented over the last year by agencies represented on the TPC. The Ohio River Bridges Project, a project that has been in the Metropolitan Transportation Plan since the very first MTP in 1969, is near completion. The Downtown bridge was opened to traffic in December 2015, and the East End bridge is scheduled for a December 2016 opening.



The Abraham Lincoln Bridge opened with a huge Walk The Bridge ceremony on December 5, 2015. Since then, the Kentucky Transportation Cabinet has earned a regional award in the 2016 America's Transportation Awards competition. The Abraham Lincoln Bridge is the winner in the Quality of Life/Community Development- Large Category. The award recognizes a transportation project that has contributed to the general quality of life and economic development of local communities. Priority was given to projects that enhance transit, demonstrate community involvement and illustrate the public benefit for users.



The Ohio River Bridges Project, which includes the construction of two new bridges across the Ohio River, the rebuild of the Kennedy Interchange (Spaghetti Junction), a major tunnel under environmentally-sensitive property, and several new interchanges in Indiana also received the Outstanding Transportation Project Award for 2016 from the Indiana MPO Council at their 2016 Conference in South Bend, IN. The purpose of the project, which is scheduled for substantial completion late this year, is to improve safety and to enhance cross-river mobility. A study prepared for the Indiana Finance Authority found that the Ohio River Bridges Project would have an economic impact of \$87 billion and support 15,000 new jobs over the next 30 years.



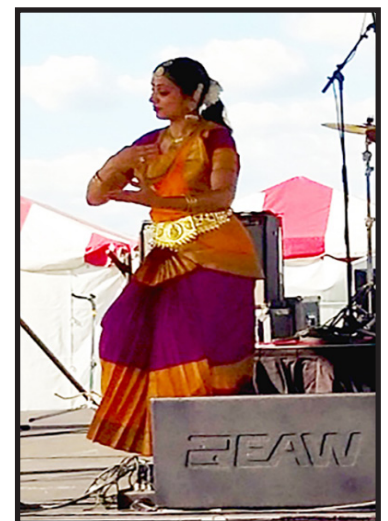
#### **Other projects of note in the region include:**

- Increasing the fleet of TARC's Zero Emissions Bus program (now the biggest fleet of all-electric buses this side of the Mississippi River)
- Construction of a portion of the Heavy Haul Road connecting River Ridge Commerce Center to the newly-extended I-265 (and ultimately the East End bridge)
- Continuation of the Dixie Highway Improvement Project by Louisville Metro, including receipt of a TIGER grant and an award for technical assistance by Smart Growth America for transit-oriented development initiatives
- TARC/KYTC/Louisville Metro programs to enhance non-motorized mobility by filling gaps in the sidewalk network and enhancing transit accessibility

## **Public Outreach**

The KIPDA Transportation Division attends many events throughout the community to get citizen perspectives and opinions on transportation matters in the region. In 2016, over 200 comments were received from more than 40 events. One of the biggest events held in the area is WorldFest. The weather for WorldFest was ideal this year and we were able to get record-breaking comments from the public during the four-day event. In addition to the WorldFest crowd at the Belvedere, thousands of deaf citizens were on site for DeaFestival at the Kentucky Center for the Arts and we were able to get comments from many of the attendees there as well.

In addition to community events and area festivals, KIPDA staff also attends events sponsored by local Chambers of Commerce, business associations, and area elected officials. Public meetings are also held to obtain comments on changes made to the MTP and the TIP, either through amendment or update. In February 2016, the first video-taping of a TPC meeting was made. Since then, additional TPC and TTCC meetings have been, and will continue to be, posted to the KIPDA Transportation YouTube channel no later than the day after the meeting is held. This is one of many efforts by the MPO to provide information to the public and to make the transportation planning process both more inclusive and more transparent.





## Regional Transportation Planning

*The Regional Transportation Council (RTC) was established to provide local and regional input to the statewide transportation planning process administered by the Kentucky Transportation Cabinet. The RTC consists of the chief elected officials and their representatives from Henry, Shelby, Spencer and Trimble counties as well as representatives from the Kentucky Transportation Cabinet. The RTC's responsibilities are to identify, evaluate, and prioritize transportation needs as part of the statewide planning process.*

The Regional Transportation Council provides local and regional input to the statewide transportation planning process administered by the Kentucky Transportation Cabinet. The RTC consists of the chief elected officials and their representatives from Henry, Shelby, Spencer and Trimble counties, as well as representatives from the Kentucky Transportation Cabinet and Federal Highway Administration. Regional Transportation Council members identify, evaluate, and prioritize transportation needs as part of the statewide planning process.

This year, there were four local meetings held with Regional Transportation Council members to identify and evaluate highway projects for next year's District Transportation

Plan that will ultimately be considered for inclusion in the Six-Year Highway Plan. KIPDA staff also participates in public outreach activities that include attending meetings of civic groups and other public events.

During 2016, KIPDA Transportation Division staff inventoried bike and pedestrian facilities in the cities of Pleasureville, Taylorsville, Bedford and Milton. KIPDA staff is also developing a Bicycle and Pedestrian Master Plan for Shelby County that will include the cities of Simpsonville and Shelbyville.



## Geographic Information Systems

**K**IPDA GIS staff has been contracted by the Kentucky Transportation Cabinet to build and maintain a comprehensive street centerline database for the past 16 years. The centerline data has been captured in the field using GPS equipment and verified through cooperative meetings with local officials from each KIPDA county in Kentucky. During the past year, Bullitt, Henry, Oldham, Shelby, Spencer, and Trimble county roads have been updated, and the Jefferson County road system was updated as a part of this effort using LOJIC-provided data that KIPDA staff converted to fit KYTC's data model.

In an effort to continually expand our capabilities and skillset, KIPDA GIS staff attended the Kentucky Association of Mapping Professionals (KAMP) conference and multiple training meetings and workshops put on by KAMP, INDOT, and other GIS agencies. KIPDA staff members belong to both the Indiana Geographic Information Council's (IGIC) and KAMP professional organizations. KIPDA Transportation Division staff attended and gave presentations at several programs and training events showcasing new and innovative uses of GIS, as well as attending the ESRI International GIS Users Conference in San Diego, CA. The ESRI event is attended by more than 13,000 professionals from all over the world, and offers opportunities to learn and share GIS experiences with peers and pioneers in the field. The GIS Section also does work for the other sections and divisions within KIPDA:

## Metropolitan Planning Organization

KIPDA GIS staff has worked in coordination with Transportation planning staff to assist with and to enhance the agency's planning activities. Transportation base layers and inventories, imagery, traffic count data, Long and Short Range projects, and the KIPDA Contacts Database are a few examples of the hundreds of data layers KIPDA staff actively maintains. As part of the Long Range Planning efforts, GIS has been used extensively in the Connecting Kentuckiana planning process.

Analysis of crash data has been the primary focus of GIS work done in support of the MTP development, but GIS is also being used extensively to determine baseline conditions for meeting Performance Measures that are to be a critical element of future transportation planning efforts. KIPDA GIS staff recently created interactive online maps of the Transportation Improvement Program (TIP) and the Metropolitan Transportation Plan (MTP) which can be accessed from the KIPDA website.

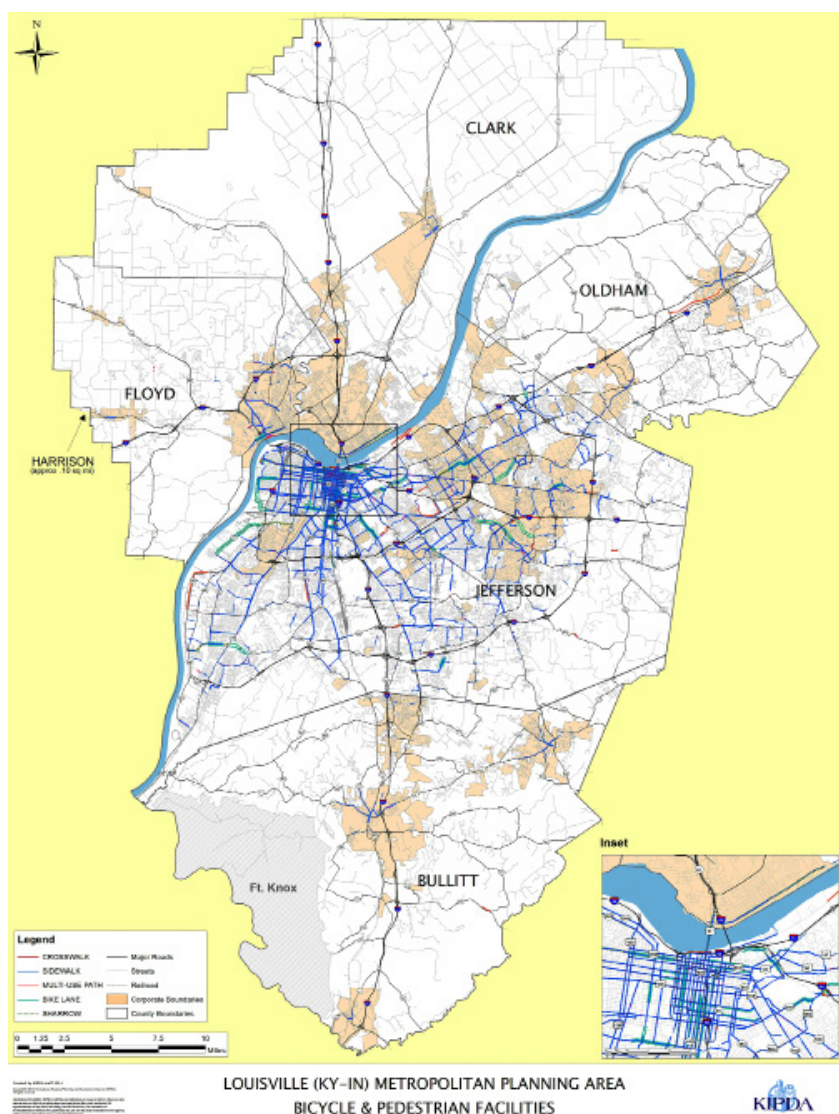
## Rural Transportation Council

Working with KIPDA's Rural Transportation Planner, the GIS staff completed several projects as part of the annual work program. Updates to mapping products such as Roadway Adequacy Ratings, Major Traffic Generators, Truck Parking Inventory, Park and Ride Lots, Crash Data and Socio-Economic Maps were completed in the past year. Staff also completed a Sidewalk/Bicycle/Pedestrian inventory for the cities of Taylorsville, Pleasureville, Bedford, and Milton for KYTC.

## Social Services

KIPDA GIS staff provides mapping services for all divisions within our agency. GIS staff assisted the Aging Division with creating a series of census-related maps for use in their procurement process. This series of maps included areas with high concentrations of persons, population concentrations of persons 25 and older, persons living in poverty, and persons without diplomas by county for the Kentucky portion of the KIPDA region.

Rural agricultural mapping to assist in client outreach was completed for Aging Services Staff and GIS analysis was applied in the development of the *Coordinated Human Services Transportation Plan* for the KIPDA region.





## Regional Rideshare/Ticket to Ride

**T**icket to Ride provides versatile rideshare programs for regional commuters. The mission of Ticket to Ride is to improve mobility, reduce congestion and enhance the quality of life in the Kentuckiana region by developing and promoting convenient, reliable and cost-effective transportation alternatives for residents and employers in the KIPDA region.

As our regional economy continues to grow, new job opportunities are becoming available on both sides of the Ohio River. Getting to and from work conveniently and affordably is a priority for most commuters, especially considering fuel costs and time spent on the road each day. The rideshare programs offered through Ticket to Ride help our region's commuters save time and money as well as provide employers with resources that benefit their team members. Plus, alternative transportation provides valuable benefits to our community including reduced traffic congestion and air quality improvement.

In FY 2016, over 2,364 commuters participated in the Ticket to Ride ride-matching program, which includes 513 new commuters. Ticket to Ride's ride-matching programs include: vanpool, carpool, school pool & bike pool. Currently, 77 active vanpools travel throughout the KIPDA region. Major destinations of the vans include: Fort Knox, Kentucky (33 vanpools), downtown Louisville (21 vanpools), and Frankfort (9 vanpools). Over 600 commuters travel daily to and from work in Ticket to Ride vanpools. The impacts of the Ticket to Ride Vanpool Program are numerous, and include reducing the vehicle miles traveled (VMT) by 8,582,112



miles annually. Approximately 66,528 auto trips were reduced over the last year and approximately 948,024 gallons of gasoline have been conserved. Vanpool members shared savings of over \$2,000,000... just on fuel costs alone!



# Social Services Division

## **Social Services Division Mission:**

*The mission of KIPDA Area Agency on Aging and Independent Living is to promote and ensure meaningful, timely, person-centered services are available for all older adults, persons with disabilities, and caregivers to improve their health, safety and overall well-being, and to provide leadership to the aging and disability network through planning and coordination.*

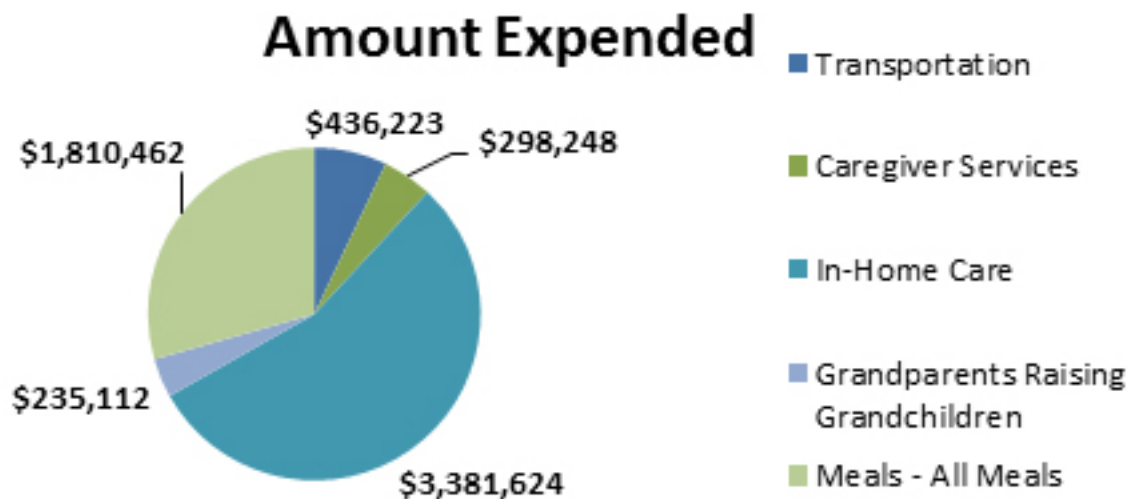
Kentuckiana Regional Planning and Development Agency (KIPDA) has been designated the Area Agency on Aging in accordance with the regulations set forth in Title III of the Older Americans Act of 1965, as amended. The Department for Aging and Independent (DAIL) expanded the name and thus responsibilities of the Area Agencies on Aging in Kentucky in 2007; now named Area Agencies on Aging and Independent Living. DAIL has also designated KIPDA as the Aging and Disability Resource Center for the region it serves. The Division of Social Services at KIPDA is responsible for

carrying out the responsibilities for KIPDA in these designations and continues to seek means and methods to prepare and progress towards fully and comprehensively serving the needs of the community now and in the future. As the Area Agency on Aging and Independent Living (AAAIL), KIPDA is responsible for the administration of federal and state funded programs for older adults, caregivers, family members, grandparents, persons with disabilities, and the general community in the Kentucky counties of Bullitt, Henry, Jefferson, Oldham, Shelby, Spencer and Trimble, which comprise the KIPDA AAAIL service area. The Division of Social Services also seeks alternate funding outside of the traditional funding categories in an effort to advance its mission.

## **Overview of Fiscal Year 2015**

The KIPDA Division of Social Services concluded another successful year of service for more than 31,833 older adults, caregivers and persons with disabilities.

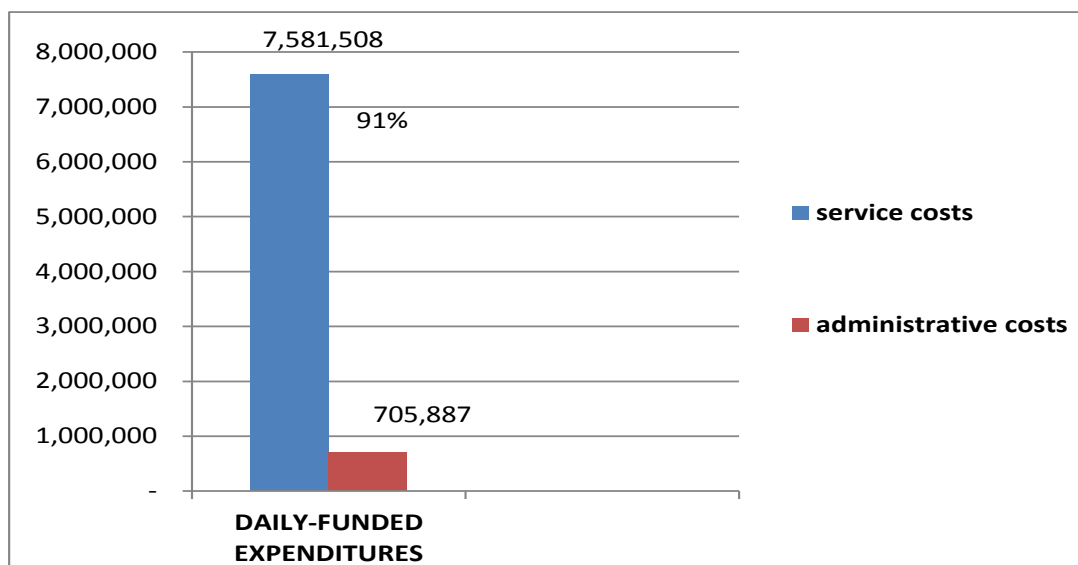
Through the work of an extensive provider network, and KIPDA staff who have used their expertise to reach persons who are the most in need, KIPDA was able to deliver a wide array of services and at an overall average cost of only \$260.33 per person per year.



Note: Amounts are un-audited

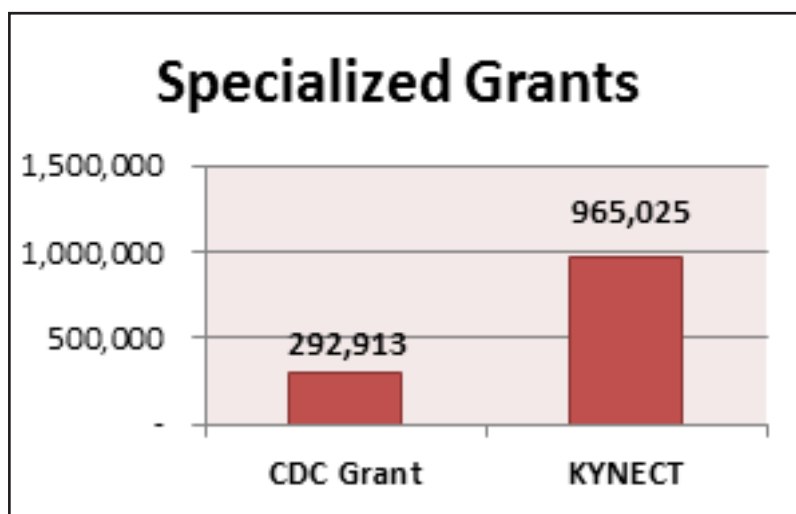
## Administrative and Service Expenditures

Of nearly \$8,287,000 (unaudited total) expended for programs and services authorized through the Department for Aging and Independent Living, 9% of the funds were expended for administrative costs between July 1, 2015 and June 30, 2016 and 91% were expended for services including: assessment, case management, information and referral, aging and disability resource center support, in addition other direct services such as transportation, meals, senior center services, caregiver support, in-home care, adult day care and personal care attendant services.



During FY 2016, KIPDA also received the amount of \$292,913 of funding from the Centers for Disease Control and Prevention to eliminate diabetes-related disparities for persons in three of our rural counties (Bullitt, Henry and Shelby) diagnosed with Type II Diabetes. These funds supported the cost of evidence-based Diabetes-Self Management classes, outreach and support for persons referred in the community in addition to evaluation of project outcomes. The KIPDA Rural Diabetes Coalition will continue to be supported through KIPDA in partnership with the University of Louisville Institute for Sustainable Health and Optimal Aging as the Coalition evolves to a regional rural Health Coalition. KIPDA will provide support for peer mentoring, continuation of classes and programs that support persons with multiple chronic conditions.

KYNECT services offered through KIPDA, in partnership with Lincoln Trail Area Development District included outreach, education and enrollment for persons seeking health insurance through the Affordable Care Act (ACA). During FY 2016, KIPDA and Lincoln Trail ADD enrolled 9,682 individual households in health insurance plans and provided outreach and education for 24,345 persons seeking information with the desire to learn more about the ACA and KYNECT.



## *Services for our Communities*

KIPDA Division of Social Services supported services and outreach for over 31,833 persons receiving Social Service Support, 9,682 receiving insurance enrollment coverage, in addition to thousands of persons receiving Medicare Benefits Counseling. The impact to our region is enormous and the following description of the financial impact for our community helps to put this impact into perspective.

KIPDA's Community Services and Supports Unit help care for vulnerable older adults who are at risk of becoming institutionalized due to many health concerns and other factors. We are aware that all persons who remain in our community, whether mobile or bed-bound, must make purchases to remain at home or in the neighborhood of their choice. The average monthly Social Security income for persons in the U.S. is \$1,341 (2016 Social Security Administration Data). Of this amount, if 50% or \$670.50 was spent in our community by persons who received a direct service through the Division, the impact to our local economies would be \$21,344,026 placed back into our local businesses.



---

## *KIPDA Aging and Disability Resource Center*

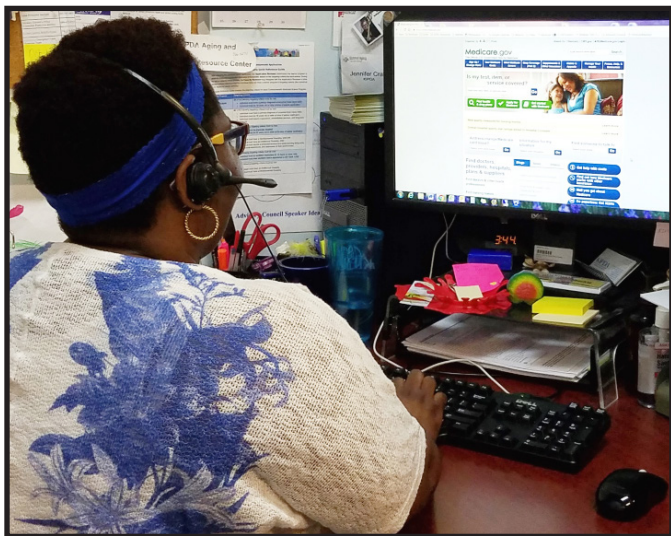
During FY 2016, the KIPDA Aging and Disability Resource Center experienced another year of significant growth in the number of individuals utilizing the programs and services offered. The number of individuals who received assistance from the ADRC rose by 35%. One possible explanation for the growth in the ADRC's caller base is the increased interest in Medicaid Waiver programs. The KIPDA ADRC is the primary application initiator in our region for all waiver programs.

Another likely explanation is the increase in the aging population attributed to the baby boomer generation. In 2016 the Kentucky Data Center estimated 201,306 person over the age of 60 resided in the KIPDA region (22% of the total over 60 population in Kentucky). Continuing to meet the increase in demand with the same staff levels has been a challenge to the ADRC. KIPDA has four full time ADRC Resource Specialists who provide options counseling for long term supports and services, program intakes and screenings, enrollment assistance and referrals to individuals within the aging and disability population to specific programs that will allow them to continue living in their community.

The ADRC receives an average of 85 contacts a day. ADRC contacts include phone calls, office walk-ins, home visits, e-mails and Facebook messages. During peak seasons, such as Medicare Annual Open Enrollment, volume can spike to over 100 contacts a day. The KIPDA ADRC provided services to an estimated 13,000 persons during FY 2016.



The ADRC recognizes that the needs of our region cannot be met by one agency alone. FY 2016 was also a year for building relationships with other community agencies who share our vision. One such partnership is the Metro United Way 211 service. Through our Memorandum of Understanding, information is shared between our agencies to improve the information provided to our clients. Metro United Way also compiles a quarterly report based on consumer activity. This report is a valued planning tool providing information on met and unmet needs and the demographics of the persons in need.



ADRC staff are more than just a referral source or a voice on the phone. Our staff help people in difficult situations understand their options along with future needs. They listen to customers to learn about their individual situation and provide assistance with clarity, patience and always with the client's well-being first. We have many repeat callers because the ADRC is a trusted source of information and assistance.

---

## *Evidence Based Health Promotion & Disease Prevention Programs*

The KIPDA AAAIL Title III D Health Promotion Program serves adults 60 years and older. This funding allows KIPDA AAAIL to offer evidence based healthy living programs to over 500 adults in a variety of settings with diverse partners throughout the region. Evidence based exercise classes (Walk with Ease, Tai Chi, and Exercise for Arthritis) are the most well-liked among the participants. Help with medication (Home Meds and Pharmacy Medication Reviews) are also popular. Many clients benefit from multiple interventions as well as Fall Prevention (FallsTalk and Matter of Balance) and chronic disease self-management classes.



---

## *Nutrition Program for Older Adults*

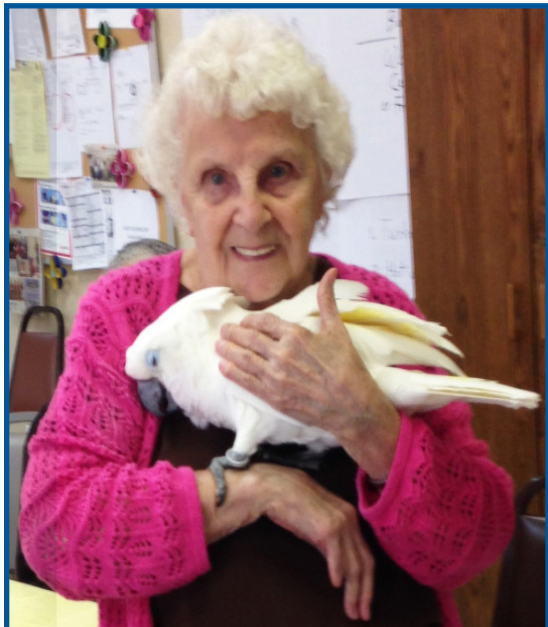
The KIPDA AAAIL Title III C Nutrition Program serves adults 60 years and older throughout the KIPDA region. Meals are often the first community based service older adults access. In addition to a meal, the program provides sensible nutrition education and connections to other community programs, services, and assistance. “Meals On Wheels” is the gateway to other social supports that help elders age at home; where they most often report they’d like to stay.

Most participants report living alone and half self-identify as impoverished. Most report themselves as white (65%), almost a third identify as African-American (32%), and a growing number report as some other race (3%). Participants are predominantly female. The largest numbers of clients are 60-69 (42.5%), the second largest group is 70-84 year olds (27.2.6%), equally as large is the 80-89 year olds (26.4%); the smallest group is over 89

years old (4%). During fiscal year 2016, 2575 older adults received meals; 817 were served in their homes and 1,758 were served in a variety of community settings. KIPDA AAAIL contracts with two caterers and three service providers. Together they spent \$2,210,571.50 (including provider match and donations).

---

## 21st Century Senior Centers



The older adult population of today is significantly different than the older adult population of yesterday and tomorrow. Senior centers in our region have long been important community resources for older adults and their families but to stay relevant they are adjusting to the changing needs of their customers. Currently, KIPDA supports four multi-purpose and five satellite senior centers – there are senior centers in all of the seven counties served by the Division of Social Services. The senior centers have adopted service models that are in line with identified community needs – wellness model, community-centered model, life-long learning & arts model or a hybrid model that combines components of the other models. While the senior centers still provide services for the frail, they are also preparing for the deluge of more fitness-focused boomers.

KIPDA-funded senior centers offer a wide range of supportive services that enhance the quality of life and promote healthy, positive and active aging. General services include, but are not limited to: advocacy, counseling, education, health and wellness programs, friendly visiting, telephone reassurance, information and assistance, outreach and transportation. During FY 2016, 5,533 persons were served through the senior centers and 123,773 units of service were delivered – this includes 30,797 units of transportation provided to 685 seniors. The transportation service is provided through a contract with Louisville Wheels and allows seniors to access medical appointments and programs offered at the senior centers.

Each of the KIPDA-funded senior centers is unique in its programming, but they all offer opportunities for social interaction and recreation. Through the many partnerships that have been established the centers have been able to expand services outside of the walls of the senior center and offer programming off-site.

---

## Transportation Services

The Area Agency on Aging & Independent Living supports transportation services to eligible seniors through a contract with Louisville Wheels. The transportation service is available in all of the counties covered by the Social Services Division. Transportation is provided to:

- Non-emergency medical appointments
- KIPDA-funded senior centers and several nutrition sites

Transportation vouchers are also available. The voucher program is a self-directed personal assistance model which allows participants to choose who provides their ride. The vouchers can be used for transportation to non-emergency medical appointments only and seniors are responsible for locating a transportation provider (formal or informal). The transportation provider is reimbursed at a flat rate. In FY 2016, 685 unduplicated clients received transportation services and 30,797 units of service were delivered.



## *KIPDA Counseling Core (SHIP and MIPPA)*

Despite the name, SHIP (State Health Insurance and Assistance Program) is not an insurance program, but it is a valuable service meeting an important need of Medicare beneficiaries of any age in understanding their health insurance benefits, bills, and rights. Operated across the nation, SHIP is a grant-funded project of the Administration for Community Living. The mission of SHIP is to empower, educate, and assist Medicare eligible individuals, their families, and caregivers through objective outreach, counseling and training to make informed health insurance decisions that optimize access to care and benefits. The KIPDA SHIP also known as KIPDA Counseling Core provides trained staff and volunteer benefit counselors in all seven counties of the region. Counselors provide in-person and telephone assistance in a variety of areas, such as billing issues, enrollment issues, understanding Medicare benefits and much more. SHIP counseling services are always confidential, unbiased and free of charge.

The number of senior citizens is increasing due to the population bubble caused by the Baby Boomers. As the over 65 population rises the number of Medicare enrollees increases monthly. As of June 2016, there were 877,310 enrollees in the KIPDA region (21% of the total in Kentucky).

The Medicare Improvements for Patients and Providers Act (MIPPA) of 2008 continues to be instrumental in helping disadvantaged seniors access help in paying for the costs associated with Medicare and to lead healthier more independent lives. Under MIPPA, the KIPDA SHIP received funding to help Medicare beneficiaries apply for the Medicare Part D Extra Help/Low Income Subsidy (LIS) and the Medicare Savings Programs (MSP's). During FY 2016 the KIPDA SHIP helped qualified low income seniors and younger adults with disabilities living in the KIPDA region submit over 500 applications for benefits that make Medicare and Prescription Drug Coverage more affordable.

The KIPDA region had 91 counselors trained to assist in our region as of June 2016. Over 2,800 persons with Medicare concerns were assisted in FY 2016. Over 646,794 persons were provided education and outreach services regarding Medicare, Medicaid, Prescription Drug Assistance, Social Security Benefits and more through variety public events. The KIPDA SHIP participated in more than 100 events such as community health fairs, The World Fest, The Kentucky State Fair, WAVE 3 Evening News Phone Banks, WLOU Lunch with KIPDA weekly broadcast, and several others.

---

## *KIPDA Homecare Program & Adult Day Care Services*

The KIPDA Homecare Program provides in-home services to individuals 60 years of age and older, who are at risk of becoming institutionalized or needing temporary service intervention to prevent deterioration of health. The Homecare program provides comprehensive assessments, case management, and many in-home services and supports such as homemaking, personal care, and respite. KIPDA also supports transportation, chore, emergency alert, incontinent supplies and lawn care to the most vulnerable of persons eligible for this service.

The Adult Day Care program serves as respite, health assistance and socialization for older adults and their caregivers. For example, Ms. Georgia Smith (right) has been a Homecare client since 2006, she is 96 years old. She has multiple health issues that affect her ability to perform activities of daily living. She expressed home receiving the homemaker services have helped her tremendously. She states, "this is a wonderful service." Ms. Smith has been a pillar in the community and was name "Queen of Newburg" on July 17, 2016; which was





dedicated to her due to 40 years of service provided to the community. The homecare program allows Ms. Smith to remain in the comfort of her home while receiving the care and services that are needed, while indirectly getting companionship due severe medical issues limiting her ability to leave home.

During the fiscal year 2016, KIPDA served 727 Homecare clients and delivered 121,385 hours of service. This equates to 167 hours on average of service per client. The total unaudited amount expended to provide services was \$3,392,866, or an average \$4,667 spent per client during the year. ADC served 21 clients using 22,110 hours of service to support caregiver and ADC clients.

---

## *KIPDA Medicaid Waiver Programs*

### **KIPDA Medicaid Waiver Programs and Special Home and Community Projects:**

The Consumer Directed Option Program (CDO), also now called Participant Directed Services (PDS) has now been in place at KIPDA since 2006. CDO/PDS are Medicaid Waiver programs for the elderly, persons with intellectual disabilities, persons with developmental delays, and/or physically or mentally disabled individuals (of any age) in



need of care services in their home and community. CDO/PDS differs from traditional waiver programs by allowing participants to have control in decisions about their care and services they receive through the Medicaid Waiver. Medicaid Waiver services make it possible for individuals to remain in their home and community and avoid institutional or nursing facility care.

The ever-growing waiver team currently consists of 16 Service Advisors (10 Full-Time and 6 Part-Time) and 2 supervising Service Advisors providing assistance to Home and Community Based (HCB) Waiver consumers, one of those Service Advisors also provide specialized service advisement to Money Follows the Person (MFP) Waiver consumers, which allows for individuals who are receiving services through traditional nursing facility care to return safely back into their home and community. The team also includes 3 Supports for Community Living (SCL)/Michelle P Waiver (MPW) Case Managers, a supervising Case Manager for SCL/MPW, an RN Service Advisor who completes and reviews assessments for HCB waiver participants and assists with special projects. The entire team is supervised by a Waiver Coordinator and supported by 3 secretarial staff members.

KIPDA serves about 500 HCB Waiver consumers and averages five to seven new referrals each week. In addition, our Case Managers provide services to over 80 MPW consumers and more than 10 participants on the SCL2 Waiver. The SCL2 and MPW Waivers are similar in that individuals must have an intellectual disability to qualify for the waiver.

## *KIPDA Special VA Initiative*

The Division of Social Services has been working diligently over this fiscal year to develop new programs and services to support our community. KIPDA has partnered with the local VA and have created the K-VIC (Kentuckiana Veteran Community Integration Coalition). This Coalition is comprised of several community professionals who are concerned about Veterans in our communities who have not accessed services through the VA and other community resources that are available to them. The goal of the K-VIC is to educate, inform, provide outreach and serve Veterans, connecting them to valuable and needed services and resources to help them to live in the community and environment of their choosing for as long as they desire. We believe connecting Veterans to these resources will also save state, federal and local funds; but more importantly will improve the quality of life for veterans and their families. The K-VIC has pulled resources together from the VAMC, KIPDA and other community-based agencies to provide cross training, community resource and education events, and outreach. KIPDA and the VA have a referral system that will allow both entities to refer clients appropriately. The work done by the K-VIC has led KIPDA to be considered by the VA for funding to support the Cover2Cover Program which will be an initiated launch from the KIPDA ADRC.

KIPDA is also working to implement a new home and community based service that will allow veterans to remain in their home and community with the care they need. The Veteran Directed Home and Community Based Services (VD-HCBS) program serves Veterans of all ages, with all types of disabilities, who are at risk of institutional placement. Veterans are able to manage their own monthly services budget and directly hire workers to provide care in their home and community. This program is very similar to the Participant Directed Services provided through the Kentucky Medicaid Waiver. KIPDA hopes to be fully functional in this initiative by next fiscal year.



---

## *KIPDA Grandparents Raising Grandchildren Program*



The Kentucky Caregiver Program (KCP) is a State General fund program that was launched in 2006. The KCP program was created to provide supportive and supplemental services to low-income grandparent caregivers that have the primary responsibility of raising their grandchildren in the absence of the biological parents. The supportive services offered include: Access to community resources, Counseling services, Support groups and Training opportunities.



The supplemental services offered include:

- Access to the vouchers that assist with purchasing school supplies, clothing and furniture
- Legal services,
- Respite services,
- Medical and dental and other services authorized by KIPDA.

The KCP program served 249 grandparents and 336 grandchildren in fiscal year 2016. The 2016 KCP annual conference for caregivers and professionals was held in May 2016 and focused on caring for the Caregiver as they care for others.

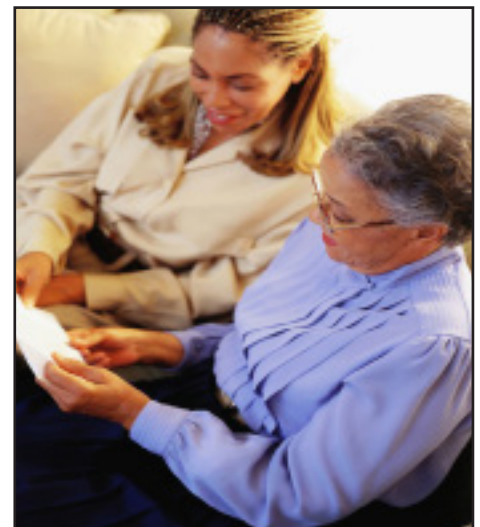


## *KIPDA Family Caregiver Support Program*



The Family Caregiver Support Program was developed nationally by mandate of the Older Americans Act, Title III-E, and amended in 2000. The federal Administration on Aging provides funding to each state to develop a multifaceted support system for family caregivers. KIPDA, with funding from the Department for Aging and Independent Living, has established a family caregiver program which serves the seven county areas of Jefferson, Bullitt, Henry, Spencer, Shelby, Trimble and Oldham Counties. The basic criteria for eligibility for the Family Caregiver Program are: an individual providing care for someone over the age of 60 or an individual under the age of 60 with a diagnosis of early onset dementia; a grandparent or relative 55 years of age or older caring for a child 18 and under; and an individual 60 years of age or older providing care to someone age 18 or under with Mental Retardation and Developmental Disabilities.

KIPDA provides the following services for Family Caregivers: information and assistance for caregivers in locating and arranging for services, caregiver counseling, training and support groups, respite in the form of in-home, day care or possibly in a residential setting, and filling in gaps in supplemental services to complement care given by caregivers. KIPDA has established a Voucher Program to assist family caregivers in the areas of: respite and supplemental services. KIPDA also contracts services out to the following agencies: Jewish Family and Career Services and Legal Aid to assist with the provision of family caregiver services throughout the region. The KIPDA Family Caregiver Support Program served more than 2,100 caregivers during fiscal year 2016.





## *KIPDA Family Caregiver Forum*

KIPDA hosted a Caregiver Conference on May 17, 2016 at Louisville's Beargrass Christian Church, on Shelbyville Rd. The Keynote speaker was Dr. Pamela Cotton who spoke at great length to the group about self-compassion and the



importance of self-care. Following Dr. Cotton's presentation, caregivers were treated to a delectable lunch and presented with information on grandparent visitation and custody laws by attorneys from Goldberg Simpson, LLC. Following lunch, caregivers were given the option to attend breakout sessions of their choice which covered a variety of topics ranging from Dementia and Caregiving to Managing Difficult Childhood Behaviors. Caregivers also benefitted from the multiple agencies that were present who provided information about their service. Those who attended the conference walked away with strategies to help them manage their daily stress and new information to assist them in their caregiver duties.

---

## *KIPDA District Long Term Care Ombudsman Program*

What is an ombudsman (om-bud-dz-muhn)? An Ombudsman is a Swedish word for advocate. A long-term care ombudsman is an advocate for an individual and their families of those living and relying on the various services provided by a long-term care facility. Long-term care Ombudsman are trained to impartially investigate and resolve residents' concerns and complaints and provide information and refer the resident to additional community resources when appropriate.

Nationally funded under the Older American's Act, title III, and title VII, the Long-Term Care Ombudsman program is dedicated to improving the quality of life for the residents who reside in long-term care facilities throughout the KIPDA region. KIPDA Area Agency on Aging and Independent Living has contracted with Catholic Charities to provide these services. This is a partnership that has continued successfully for over twenty years.

The KIPDA Long Term Care Ombudsman program serves over one hundred nursing homes, family care homes, and personal care homes and their family members in the KIPDA region. Primarily staffed by volunteers, each of these facilities are visited, not only to protect the rights of the residents, investigate and resolve residents rights, and to empower the residents of these facilities to make an informed choice, but to be a regular friendly visitor with an open ear and a warm heart.

Teaching and empowering residents and families of residents living in long-term care facilities the importance of understanding and promoting residents' rights are another mission of the long-term care ombudsman program. Guaranteed by federal law, nursing homes are required to "promote and protect the rights of each resident" in the facility and places a strong emphasis on individual dignity and self-determination. The KIPDA long-term care ombudsman program works with resident councils, family councils, friends, relatives and the residents themselves and aids them to understand their fundamental rights and how to advocate to enforce them.

The KIPDA Long Term Care Ombudsman program advocated and upheld the rights for approximately 109 long term care facilities consisting of 7,909 beds in the fiscal year 2016.

- 369 complaints were documented and verified
- 351 complaints were resolved to complainant satisfaction
- 1,387 consultations regarding residents benefits, residents rights, ombudsman services, and the complaint processes to individuals, families and facility staff
- 251 resident's council meetings were attended by Ombudsman, encouraging the residents to advocate for themselves and others who are unable.
- 1 facility closures
- 1,672 hours of volunteer donated time

The importance of volunteers is crucial to the program and it is always looking for members of the community that would like to become a Certified Ombudsman or a Friendly Visitor. At this time the program has 24 volunteers, 1 district long term care ombudsman, 2 staffed long term care ombudsman, and one volunteer coordinator. If you or anyone you know is interested in learning more about this program please contact: Natalie Brown-Radtke, District Long-term Care Ombudsman at Catholic Charities at (502) 637-9786 or nbrownradtke@archlou.org.

---

## *KIPDA Kynector Program*

The Program has seen significant changes in the past year. Open Enrollment began with a major state provider, Kentucky Health Cooperative, shutting down. 75% of the market share of QHP in Kentucky was serviced by this group. Closure of Kentucky Health Cooperative required around 80,000 individuals to actively enroll and choose a different health insurance provider. Slightly over 12,000 of those individuals did not choose to reenroll in an Exchange Plan.

KIPDA provided at least one kynector 6 days per week to the retail collaboration location at Mall St. Matthews from 9am-9pm throughout Open Enrollment. In our time at this location, over 7000 individuals were assisted with enrollment or correcting issues.

Kynectors continued to assist working clients through enrollment opportunities at several businesses or benefit fairs where employees did not qualify for employer sponsored insurance. We also assisted in school fairs and community enrollment events for families that were dual eligible for KCHIP and QHP's.

KIPDA kynectors continued to be the leaders in enrollment opportunities for the justice involved populations. Applications were completed at prisons (state and federal), county and regional jails, probation and parole, half-way houses, recovery homes and similar locations throughout region 3 to provide the best assistance to a needy, high risk population. Our role led to some additional reform that would benefit the previously incarcerated.

KIPDA kynect would continue to conduct enrollments at both Refugee Intake Centers and work with these community organizations to improve general immigrant enrollment in heavily populated areas.

Since December of 2015, kynect has been undergoing a transition to switch to a state-based federal marketplace utilizing healthcare.gov as the platform. The transition began the end of February with benefind.ky.gov coming online to be the self-service portal of all state supported benefit programs. This system coming online was not an easy process and led to a great deal of excessive waits to work with the DCBS office to solve consumer problems and technical issues. This program affected clients in every social service program that KIPDA works with, having a great deal of impact on the kynectors and our trying to assist with all clients in need,

with the understanding that we, as assistors, were the most familiar with the data system and its processes.

Throughout the summer, kynectors have been working diligently to solve problems, assist with the transitions, and maintain coverage for thousands of clients experiencing difficulties. In addition, special enrollment windows were still available when life changing circumstances occurred for many Kentuckians. The kynect program has played an extremely active role in helping to identify trends in technical programming so that IT specialists could repair the system. Errors and problems have swamped the process overwhelmingly at times, to the detriment of Kentucky Citizens, and the assisters have eased the circumstances and navigated the system to truly assist individuals from across the state, not just in our own region. Well-trained experts in their fields, KIPDA Assisters have greatly contributed to the efforts of maintaining coverage for our states most vulnerable populations.

Over the last two months, Assisters have been training to provide assistance in 3 separate data systems for Open Enrollment 2017. Kynect, Healthcare.gov and benefind will all be platforms utilized by the Assister Program as it moves through the next open enrollment. As in years past, enrollment times overlap with other benefits and time periods and Assisters must educate and conduct outreach to all populations about the appropriate timelines for enrollment for the benefit that applies to any particular consumer. Medicare and Medicare Supplements Open Enrollment is October 15-December 7. Medicaid Switch Plan Open Enrollment is October 24-December 16. Health Insurance Exchange Open Enrollment is November 1-January 31.

All individuals currently or needing to enroll in a ACA Exchange plan must do so during that window, or be locked out of insurance and forced to pay a penalty for the 2017 year. Due to the transition, all individuals enrolled in a kynect QHP must actively seek enrollment with a new application on Healthcare.gov. 86,000 across the state, and approximately 26,000 of those are in the Region 3 KIPDA service area. KIPDA Assisters anticipate helping with these individuals to ensure seamless coverage. In addition to these clients, KIPDA Assisters will continue to enroll individuals into Expanded Medicaid as needed. Community Outreach will continue with targeted populations of Hispanic and Eligible but never enrolled individuals.

KIPDA Assisters continue to saturate the region with enrollment and education opportunities averaging over 150 locations per month throughout the year. Best practices developed and utilized in KIPDA region have been adopted and rolled out nationally for guidance, by CMS, to other states on all types of platforms. Despite the challenges of the past year, KIPDA Assisters have made marked strides in providing service to Kentucky.

## ***KIPDA 2016 Fan Fair***

The inaugural Fan Fair of 2016 was an enormous success with the help and generosity of local businesses, residents, and community organizations. The event provided electric fans to seniors and individuals with a disability throughout the KIPDA region during the summer's hottest months. Sponsored by KIPDA, the Louisville Metro Office for Aging & Disabled Citizens (OADC), United Steelworkers Union 1693, and WLKY; more than 600 fans were donated to be distributed throughout the KIPDA counties.

Members of the community, along with local and national businesses, made donations in both the form of fans and cash amounts. Donors for the event included Lowes Hardware, United Steelworkers Union 1693, Park Community Federal Credit Union, Electricians Union 396, Diversicare – Highlands Health & Rehab, Louisville Lodge 8 of BPO Elks, and many others.





In total \$2,285.00 in donations were received to purchase fans for the event, and 473 actual fans were donated with an estimated value of \$7,095.00.

The Fan Fair took place on July 16th at the United Steelworkers Union Hall in Louisville. The distribution event coincided with an information and health fair for residents to participate and receive information about services in the community. Vendors from the Long Term Care Ombudsman, AARP, UofL School of Dentistry, Senior Medicare Patrol and many others participated in the event. Media outlets WLKY, WDRB, Courier-Journal, were present photographing and recording the event that assisted over 100 people that day. Throughout the months of July and August, 50 fans were donated to each of KIPDA's rural counties and 20 fans to each of Jefferson counties neighborhood places. Collaborating with community ministries, food distribution sites, and area providers these fans were delivered to individuals who were in need of cooling assistance. At many sites, the donated fans were distributed within an hour with several individuals requesting to be placed on a waiting list for future donations.

The success of this event and the graciousness of the community members have already sparked interest for Fan Fair 2017, hopefully making this an annual event that can be shared throughout the KIPDA region.

"We are so very grateful for the incredible outpouring of support we've received from the Louisville community," stated Sarah Teeters, Coordinator for OADC, part of Louisville Metro Community Services. "This level of need and interest will hopefully keep this program going every summer."

"Providing these fans is an immediate step we can take to provide relief to vulnerable members of our community, I am elated that a conversation between two individuals - from two different agencies - turned into such an incredible response from the community," stated Jennifer Craig, Aging and Disability Resource Specialist for KIPDA.





## *The Kentucky Coalition for Healthy Communities*

The Kentucky Coalition for Healthy Communities (KCHC) was established in 2016 as an expansion of the KIPDA Rural Diabetes Coalition (KRDC). The KRDC was part of a 5-year, \$2.5 million initiative funded by the Centers for Disease Control and Prevention (CDC) that KIPDA received as part of the National Program to Eliminate Diabetes Related Disparities. The new expanded coalition, KCHC, was formed as the result of intensive sustainability planning done by the grant team. Current funding for the KCHC comes from the American Planning Association's Plan4Health initiative, of which KIPDA was a grant recipient, and the Health Resources and Services Administration's Geriatric Workforce Enhancement Program, which has provided funding to the University of Louisville as well as KIPDA as a subcontractor.



The mission of the KCHC is to create healthy communities and improve the health of all people through:

- Health awareness and education
- Motivating self-care
- Creating healthy living resources
- Connecting communities to promote health
- Improving care coordination through empowering communities

The KCHC has worked to fulfill that mission through several initiatives, including expanding the annual county challenge walks. Walks were held this year in Bullitt, Henry, Oldham, Shelby, and Trimble Counties, with Oldham County winning their first challenge by totaling 251,188 steps. The walks were a great success and the coalition hopes to engage even more counties and residents next year.



## Special Projects and Partnership Initiatives

### Community Care Pilot Program

The Community Care Pilot Program was created this year as an expansion of the Peer Mentor for Diabetes program. In 2013, the KIPDA Rural Diabetes Coalition (KRDC) in partnership with University of Louisville which was funded through a grant from the CDC, developed and implemented a peer mentor program for adults over 50 with type 2 diabetes in three rural counties in north central Kentucky (Bullitt, Henry, and Shelby Counties). The CDC grant ended at the end of 2015, but the Peer Mentor Program has continued through funding provided by KIPDA.

The peer mentors are community members who have learned successful self-management of their chronic illness, are skilled in motivational interviewing and have vast knowledge of disease-specific resources. They provide intensive, one on one support and motivation through visits, phone calls, and community based activities to their mentee, another community member who has similar disease-specific struggles. The topics covered in the program include blood glucose testing, exercise, healthy eating, distress and talking to their health team. During their weekly sessions, they connect their mentees to disease-specific resources offered by national and local organizations, as well as, introduce them to their “community of carers” including but not limited to pharmacists, social support groups, programs offered at county extension offices, and traditional and nontraditional venues for exercise. They help them set realistic weekly goals and assist their mentee in removing barriers while creating the connections.

KIPDA Area Agency on Aging and Independent Living was honored this year with the National Association for Area Agencies on Aging’s (n4a) Aging Achievement Award for the Peer Mentor Program. The 2016 n4a Aging Innovations and Achievement Awards recognized Area Agencies on Aging (AAAs) and Title VI Native American aging programs that develop and implement cutting-edge approaches to support older adults, people with disabilities and their family caregivers. A part of the criteria for the selection of the honorees was the ease with which other agencies could replicate the program in their communities. The 2016 n4a Aging Achievement Awards honored traditional and new strategies in a range of categories including Care Transitions, Caregiving, Civic Engagement, Community Planning & Livable Communities, Elder Abuse Prevention, Ethnic & Cultural Diversity, Health-LTSS Integration, Healthy Aging, Home & Community-Based Services, Nutrition, Technology, Transportation & Mobility and “You Name It!”

In addition to the Peer Mentor Program, the Community Care Pilot aims to provide wrap around services for older adults struggling to manage their chronic illnesses. The four initial clients were offered medication management services, transportation vouchers, peer mentoring, and access to the Healthy Lifestyles Center at KentuckyOne hospital in Shelbyville, which included consultations with an exercise physiologist. KIPDA hopes to build and expand upon the Community Care Pilot in order to create a program that can reduce the disparities related to chronic disease self-management in the rural service region.





# KIPDA Staff

## **Jack Couch, Executive Director**

### **DIVISION OF ADMINISTRATIVE SERVICES**

Kelly Tyra, Director of Human Resources  
Bev Claxon, Administrative Secretary  
Crystle Chisholm, Receptionist  
Rachael Miller, Administrative Services Specialist

### **IT SERVICES**

Jennifer Wahle, Network Administrator  
JR Chisholm, Database Technician  
Nicole Flowers, Database Technician  
Paul Sangalli, Computer Specialist

### **DIVISION OF FINANCE**

Tom Pope, Director of Finance  
Lynne Evans, CDO Accounting Supervisor  
Debbie Brown, Medicaid Bill/File Maintenance Clerk  
Barbara Chilton, Accounting Technician II  
Ginny Lee, Accounting Technician I  
Kristen Thomas-McGill, Accounting Technician I  
Soua Dietsch, Medicaid Billing Clerk  
George Earl, Accountant  
Jennifer Martinez, Fiscal Officer

### **DIVISION OF PUBLIC ADMINISTRATION**

Jarrett Haley, Director of Public Administration  
Felicia Harper, Economic Development Specialist  
Eric Dennison, Public Administration Specialist  
Justin Carter, Regional Planner

### **TRANSPORTATION DIVISION**

Larry Chaney, Director of Transportation

#### **Transportation Planning**

Sarah Baer, Transportation Planner I  
David Burton, Transportation Planner III  
Ashley Davidson, Community Outreach Specialist  
Amanda Deatherage, Transportation Planner I  
Randall Embry, Rural Transportation Planner  
Gina Caine, Transportation Administrative Technician  
Mary Lou Hauber, Transportation Planner III  
Lori Kelsey, Transportation Planner III  
Andy Rush, Transportation Planner III

Randy Simon, Transportation Planner III

Nick Vail, Transportation Planner II

#### **Commuter Services**

Stacy Burton, Alternative Transportation Program Mngr.  
Melissa Bennett, Alternative Transportation Technician  
Elizabeth Bowling, Alternative Transportation  
Marketing Representative  
Alicia Lawson-Russ, Alternative Transportation  
Technician  
Kit Lindsay, Van Maintenance Coordinator  
Patrick Weis, Van Maintenance Technician

#### **Geographical Information Systems (GIS)**

Adam Forseth, GIS Department Manager  
Mike Clair, GIS Specialist  
Zach Herzog, GIS Specialist  
Aaron Jones, GIS Specialist

### **DIVISION OF SOCIAL SERVICES**

Barbara Gordon, Director of Social Services  
Jessica M. Elkin, Community Services/Supports Manager  
Greg Williams, Budget & Contracts Admin Coordinator  
Sue Johnson, Nutrition/Social Services Planner  
Vicki Polo, Social Services Planner  
Vesselina Romanov, Social Services Planner  
Madri Hall-Faul, Special Projects Coordinator  
Susan Travis, Social Services Secretary  
Charles Turner Jr., Quality Management Planner  
Kim Hinkel, Community Resource Planner  
James McGown, Budget and Contracts Planner  
Shelia Harber, Social Services Support Staff

#### **Community Care Project**

Ginger Gault, CDC Diabetes Peer Mentor  
Diane Goodwin, CDC Diabetes Peer Mentor

#### **Aging and Disability Resource Center (ADRC)**

Michelle Wade, ADRC Team Leader/SHIP Coordinator  
Jennifer Craig, ADRC Specialist III  
Sharell Lowery, ADRC Specialist II  
Lisa McDonald, ADRC Specialist I  
Camicha Harkness, ADRC Specialist I  
Christine Hooper, SHIP Volunteer Coordinator

**Social Services Support Staff**

Kim Chambers, Social Services Support Staff  
Cathy Kilgore, Social Services Support Staff  
Lynn Williams, Social Services Support Staff  
Jennifer Davis, Social Services Support Staff  
Teresa Miller, Social Services Support Staff

**KIPDA kynect Program**

Kelli Cauley, In-Person Assister Team Leader  
Jaye Allen, In-Person Assister  
Mia Anderson, In-Person Assister  
Christie Hartlage, In-Person Assister  
Rensha Reeder, In-Person Assister  
Kristen Abell, Outreach, Education & Enrollment Coordinator

**HomeCare Case Managers**

Danah Smith, Case Management Supervisor  
Carla Alvis, Case Manager  
Christy Cook, Case Manager  
Olivia Crossland, Case Manager  
Colleen Curran, Case Manager  
Mosezella Jones, Case Manager  
Ruth Montgomery, Case Manager  
Jeneen Noah, Program Assessor  
Greg Perdue, Case Manager/Assessor  
Gay Sweatt, Case Manager  
Rita Wells, Case Manager

**Consumer Directed Options/Participant Directed Services**

Suzanne Bittenbender, Waiver Coordinator  
Dia Erpenbeck, MWM & SCL Supervisor  
Jennifer Hopper, HCB Supervisor  
Holly Peters, HCB Supervisor  
Brittany Baines, Service Advisor  
Elizabeth Kim, Service Advisor  
Jeffrey Aubin, Service Advisor  
Jessica Delafield, Case Manager  
Rose Leary, Service Advisor  
Jamie Richardson, Service Advisor  
Joanna Weiss, Service Advisor  
Carolyn Cappiello, Service Advisor  
Shantrece Belmar, Service Advisor  
Lindsey McCormick, Service Advisor  
Cara Glass, Service Advisor

Annie Sweat, Service Advisor  
Kay Gilbert, Service Advisor  
Brenda Norris, Service Advisor  
Evelyn Woock, Service Advisor  
Courtney Lawson, Case Manager  
Danielle Readus, Case Manager







Annual Report 2016