

K I P D A

Kentuckiana Regional Planning
& Development Agency

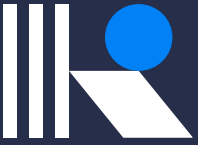




Kentuckiana Regional Planning and Development Agency

MISSION:

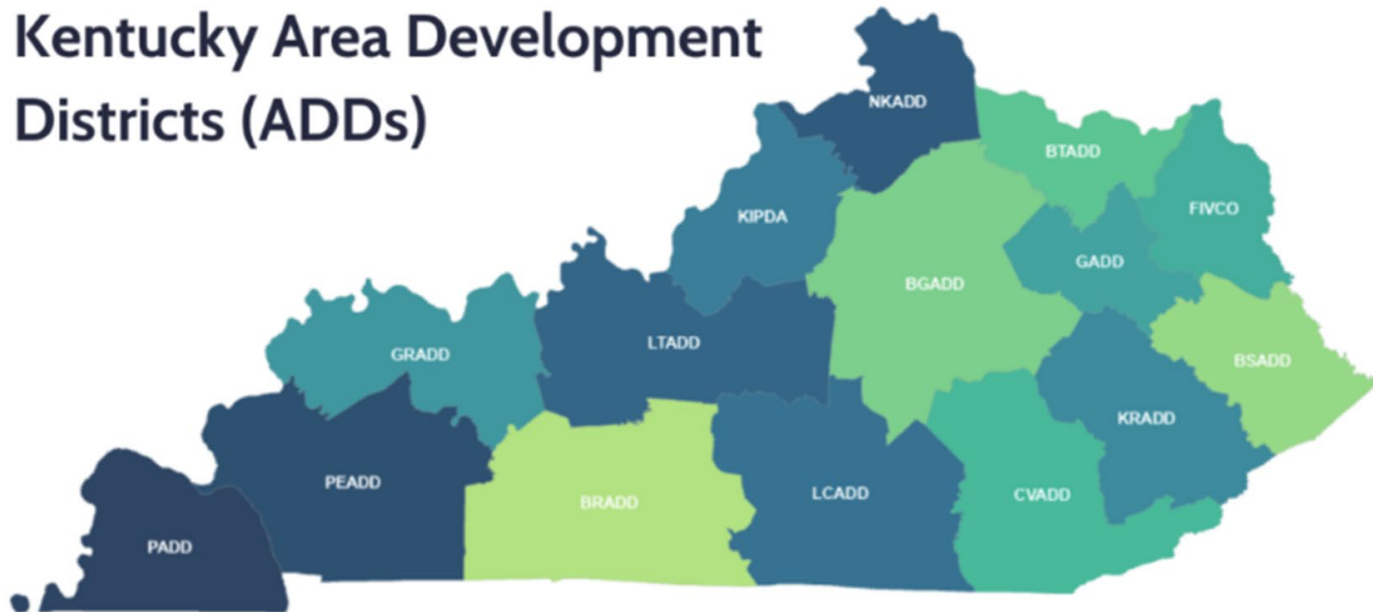
Working in partnership with state and local governments, we encourage the growth of our region by providing resources to help people in Kentuckiana thrive. We strengthen mobility, quality of life, and economic opportunity for all community members by supporting local officials, older adults, those with disabilities, and their caretakers.



What is an ADD?

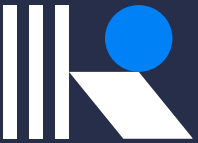
Sub-state, regional planning and economic development agency; created to provide a focal point for a necessary Local – State – Federal Partnership.

Kentucky Area Development Districts (ADDs)



KIPDA Divisions

- Social Services
- Community and Economic Development Services (CEDS)
- *Transportation*
 - *MPO*
 - *GIS*
 - *Every Commute Counts*



What is an MPO?

- MPO = Metropolitan Planning Organization
- Policy board of an organization created and designated to carry out the transportation planning process
- Federal Highway Act of 1962
- Continuing, Comprehensive, and Cooperative (3C)
- Urbanized Areas of 50,000
- Transportation Management Areas (200,000+)
- U.S. Code Title 23 Section 134
- U.S. Code Title 49 Section 5303

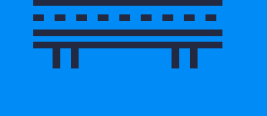
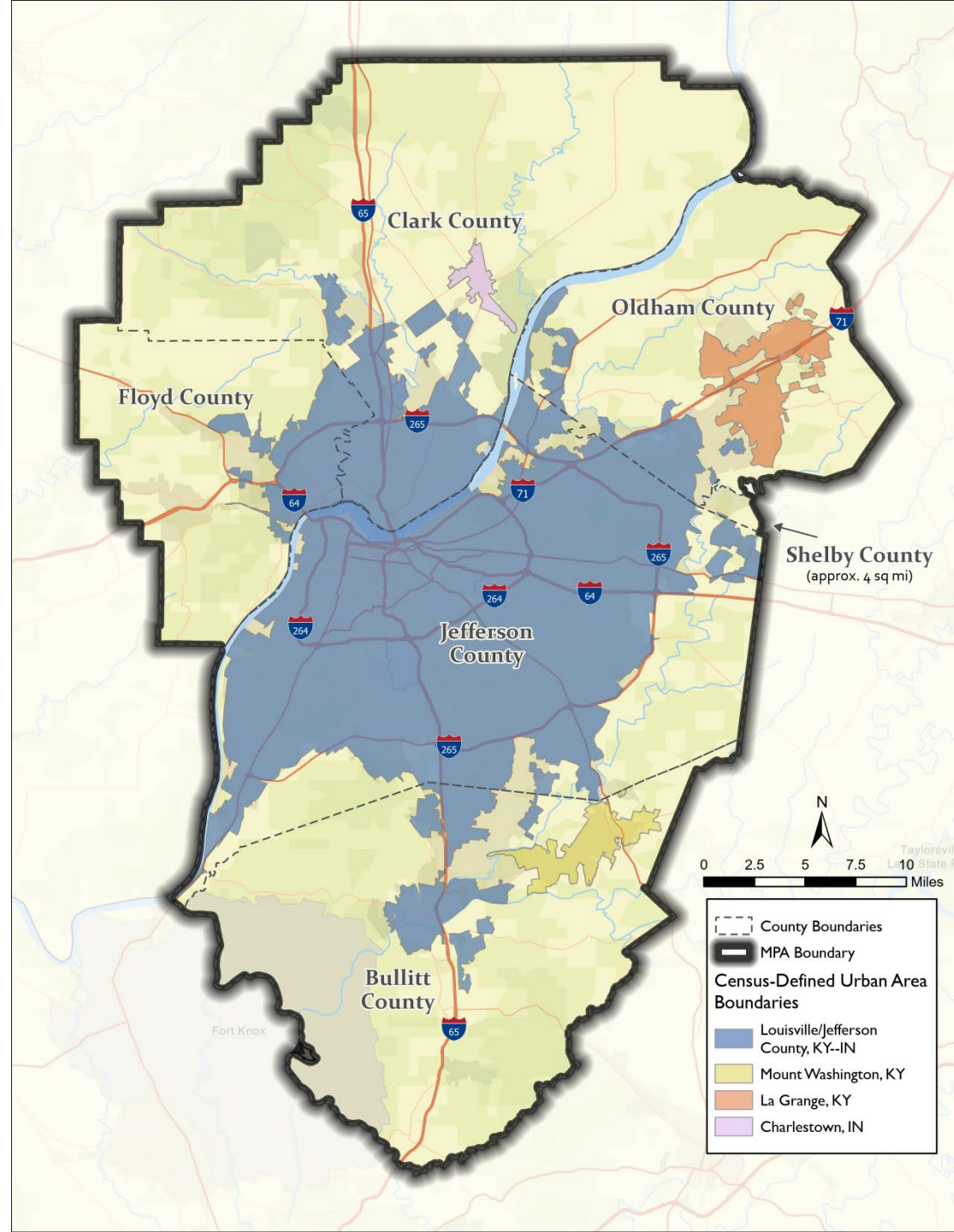


How is the MPO funded?

- FHWA Metropolitan Planning (PL) funds
 - 80 (Federal) / 20 (KIPDA) match in Indiana
 - 80 (Federal) / 15 (KIPDA) / 5 (KYTC) in Kentucky
- FTA Section 5303 funds
 - 80/20 match in both states
- Federal funds are passed through State DOTs to MPOs
- KIPDA funds are paid exclusively from local dues paid by local governments



2020 Census-Defined Urbanized Area Boundary Map



Transportation Policy Committee

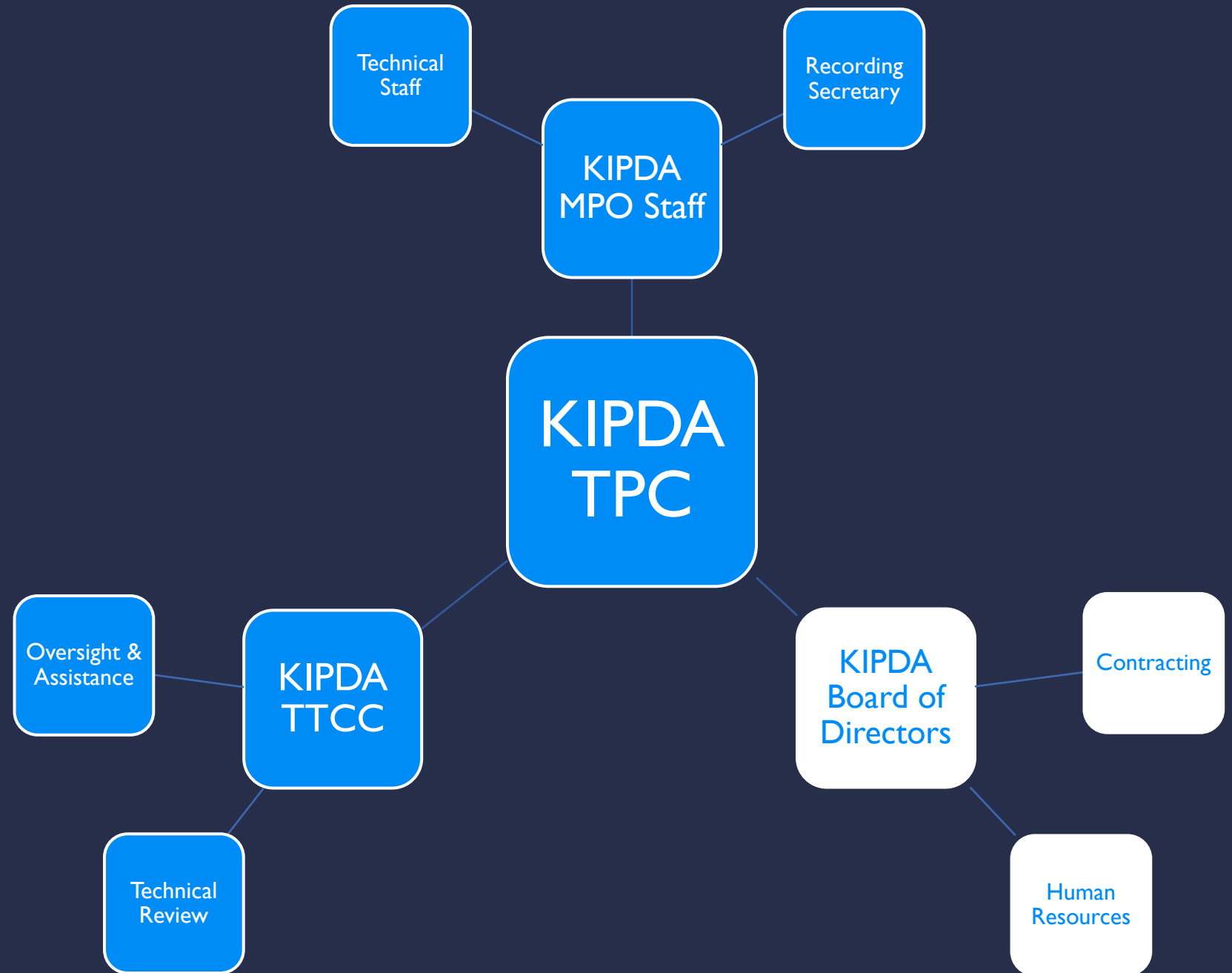
- 18 Voting Members + 8 Advisory Members

- Bullitt County
- Charlestown
- Clark County
- Clarksville
- Floyd County
- INDOT – Commissioner
- INDOT – Seymour
- Jefferson Co. League of Cities
- Jeffersontown
- Jeffersonville
- KYTC - Secretary
- Louisville Metro
- Louisville Regional Airport Authority
- New Albany
- Oldham County
- Shively
- St. Matthews
- TARC
- FAA
- FHWA – Indiana Division
- FHWA – Kentucky Division
- FTA
- KYTC – District 5
- Louisville Metro Planning & Design
- TTCC Chairperson
- US Dept. of Housing & Urban Dev.





TPC Relationship to KIPDA

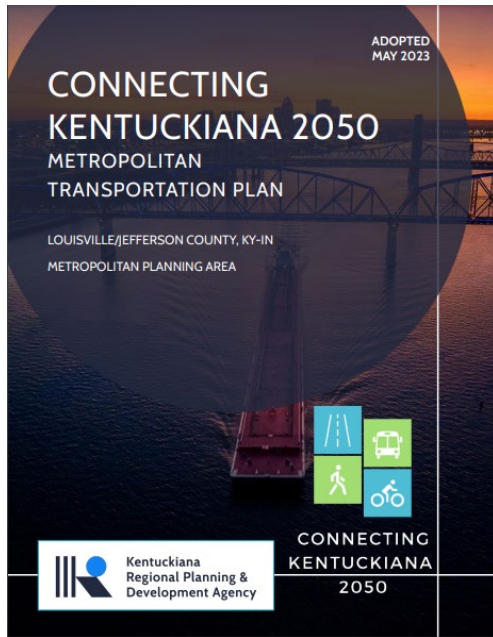




Transportation Technical Coordinating Committee (TTCC)

- 33 Voting Members + 19 Advisory Members
- Membership includes (only members from within Jefferson County listed):
 - Jeffersontown
 - KIPDA
 - KY Division of AQ
 - KYTC – District 5
 - KYTC – Planning
 - KYTC – OTD
 - Jefferson Riverport
 - Louisville Metro APCD
 - LM Economic Dev.
 - LMP&D Services
 - LM Public Works
 - Louisville Regional Airport Authority
 - St. Matthews
 - TARC Accessibility Advisory Council
 - TARC
 - GLI
 - Louisville Water
 - MSD
 - TRIMARC
 - U of L





Core Planning Products



Metropolitan Transportation Plan (MTP)

- Long-range policy document
- Financially reasonable
- Projects transportation needs, outlines vision and priorities for next 20+ years
- Updated every four years
- Updated in Spring 2023
- Frequently amended

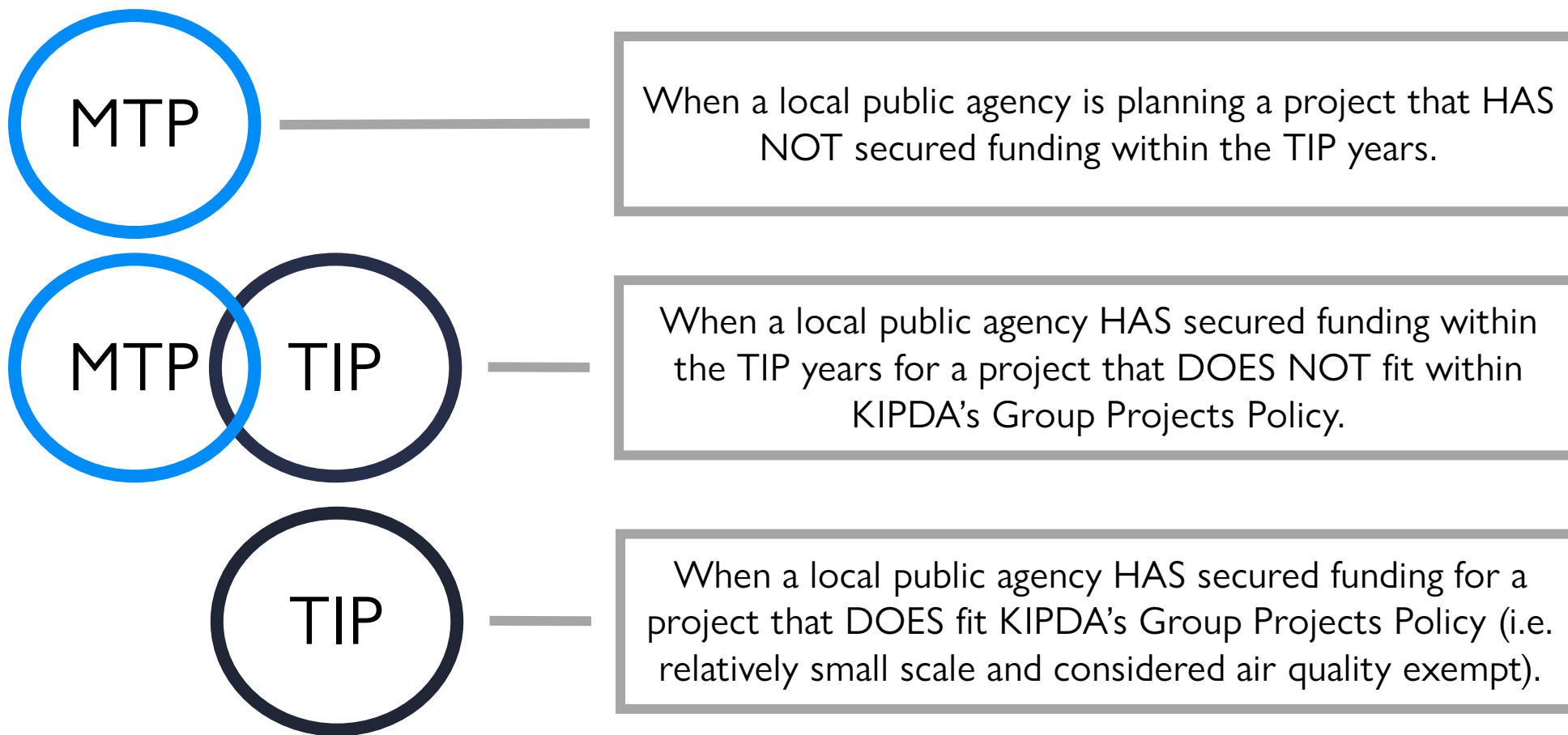
Transportation Improvement Program (TIP)

- Short-range fiscal programming document
- Fiscally constrained
- Includes all federally funded projects and regionally significant state/locally funded projects that are set to occur in the next four years
- Updated in Spring 2023
- Frequently amended and modified
- [FY2025-2028 Update](#) currently underway



MTP & TIP Projects

There are three (3) different scenarios for which transportation projects may exist in the MTP and/or TIP.



Transportation Funding Overview

There are four primary agencies responsible for awarding transportation funds to projects in the KIPDA region. This list is not exhaustive of every state/federal funding program and does not include Federal agencies that conduct their own discretionary/competitive grant programs.

INDOT

- NHFP
- NHPP
- Section 130
- STBG - Statewide

KYTC

- CMAQ – Statewide
- HSIP - Statewide
- NHFP
- NHPP
- Section 130
- STBG – Statewide
- TA – Statewide
- PROTECT* - Statewide

TARC

- Section 5307
- Section 5310
- Section 5339

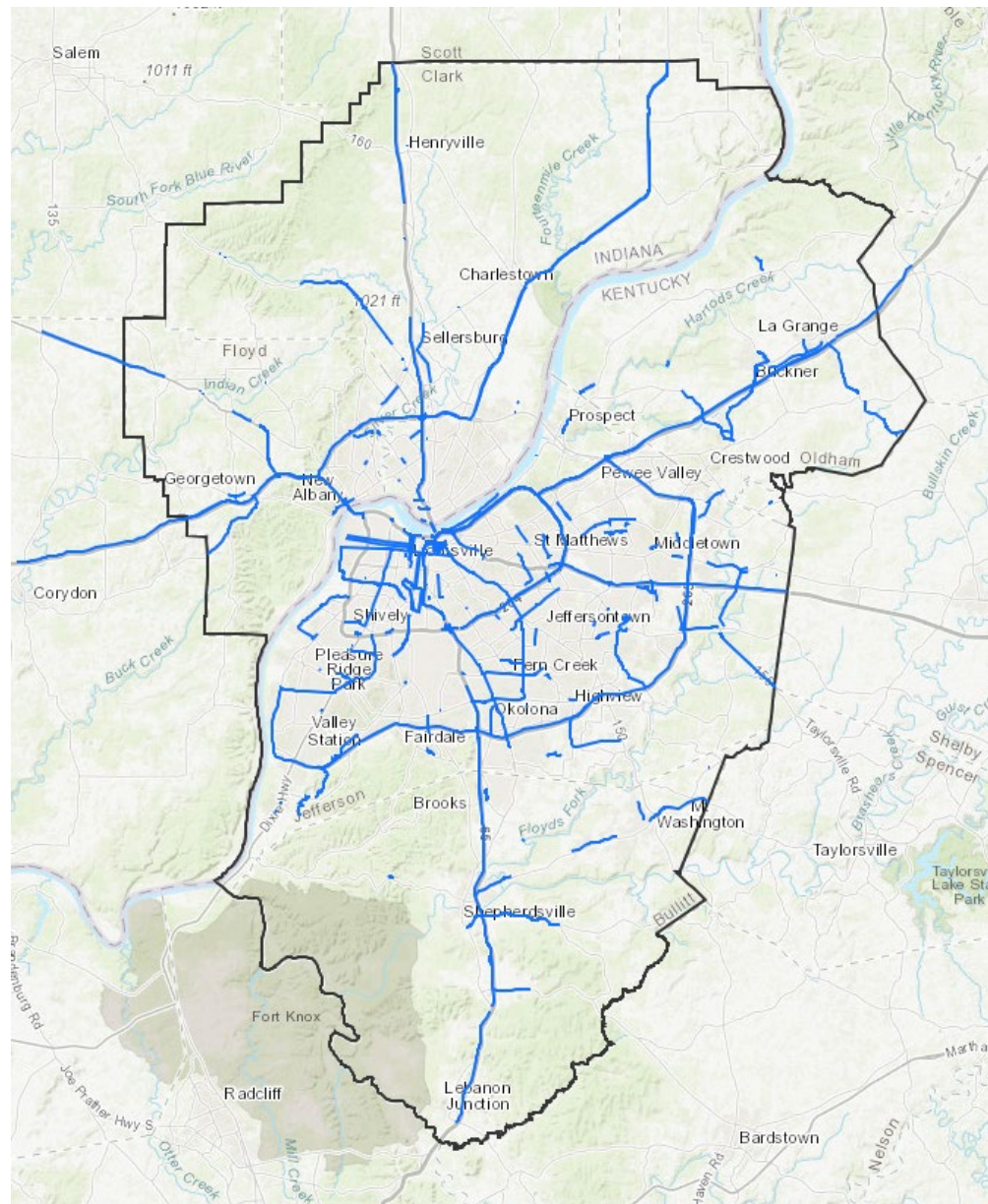
TPC (KIPDA) MPO Dedicated Funds

- CMAQ - IN only
- HSIP – IN only
- STBG – Both states
- TA – Both states
- CRP* – Both states
- PROTECT* – IN only

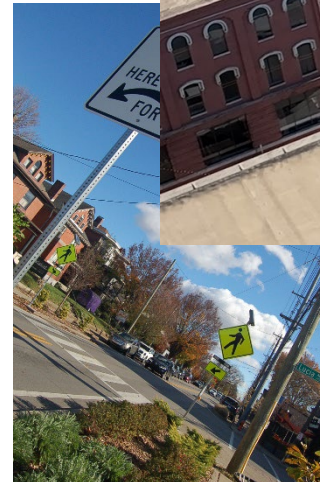
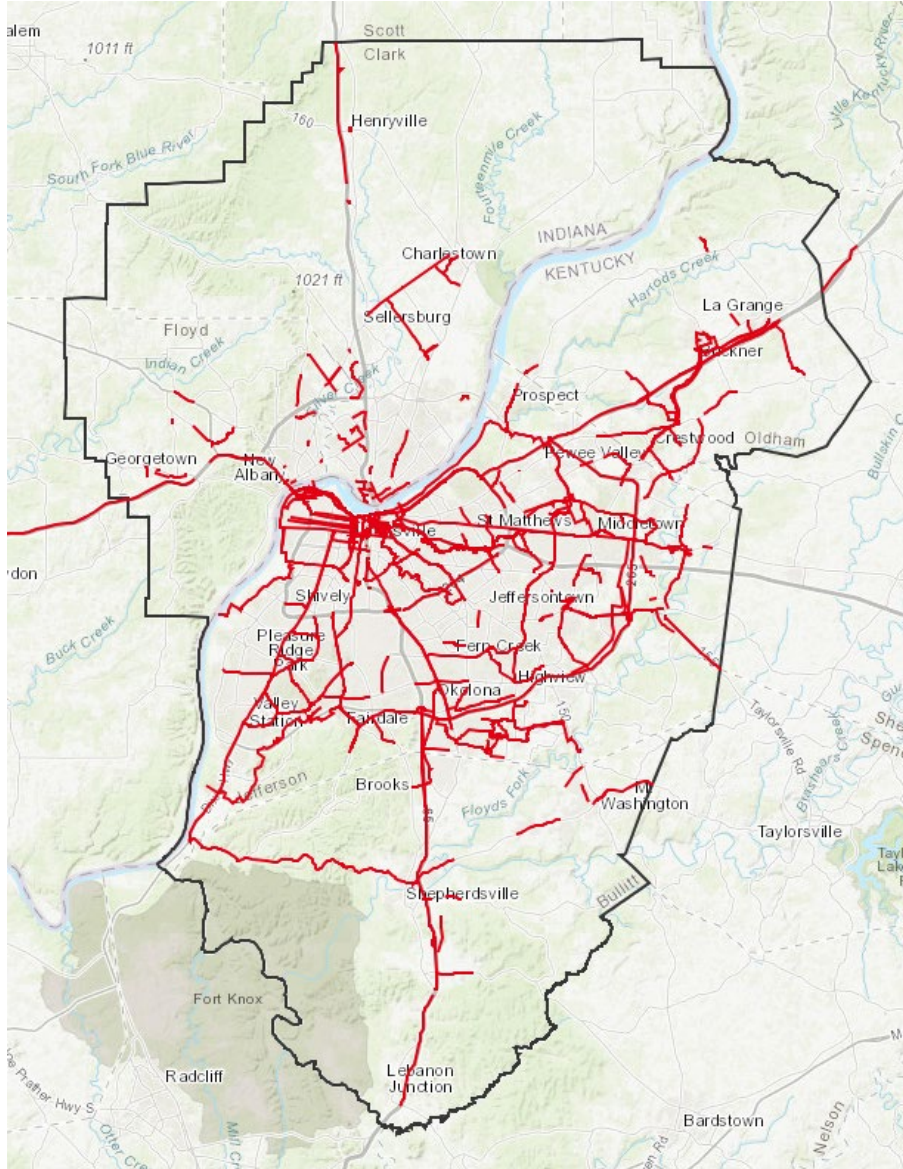
** Added in IIJA*



TIP Projects Interactive Map



MTP Projects Interactive Map

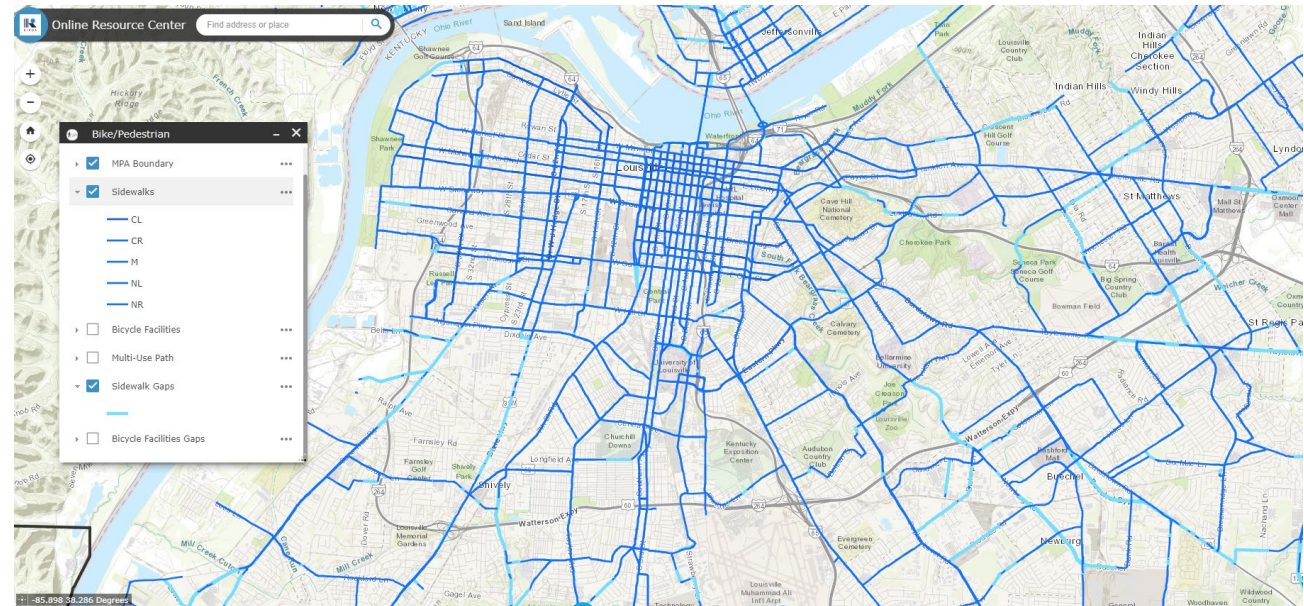
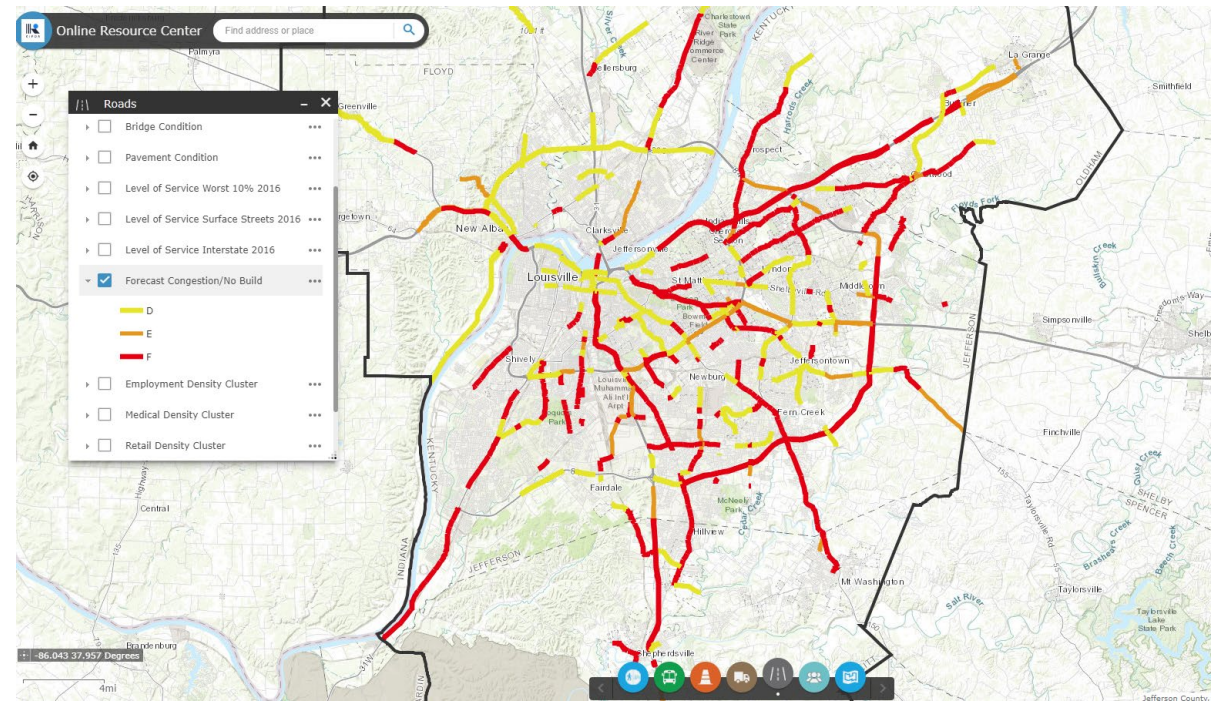




Geographic Information Systems (GIS)

[Link to KIPDA GIS Data Hub](#)

- Bike/Ped Facilities & Gaps
- TARC Routes
- Congestion Analysis
- Crash Analysis
- Asset Management
- Demographics
- Project Information
- Environmental Red Flag Inventory
- ...much more



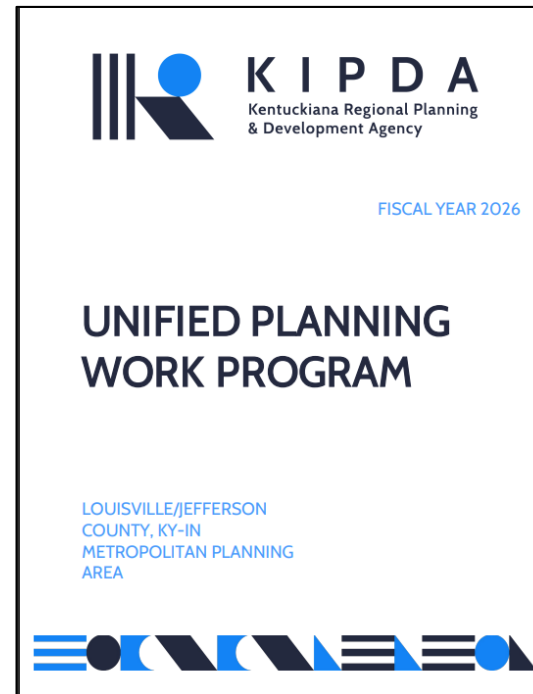
Other Core Planning Products

Unified Planning Work Program (UPWP)

- Annual statement of work identifying the planning priorities and activities
- Includes planning study scopes, resulting products, schedules, costs and source of funds
- FY 2026 UPWP expected approval this month: includes FRA Corridor Grant & FHWA SS4A Grant; Complete Streets Planning

Public Participation Plan

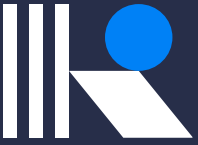
- Outlines the methods, strategies, and expectations for public engagement and outreach in addition to state and federal regulations regarding public participation.
- Provides details as to when the MPO must and will offer a public comment period on a specific topic, plan, or set of projects.



Other Planning Products

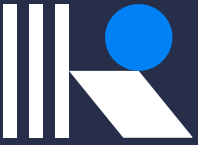
<u>Complete Streets Policy</u> Adopted in August 2022	<u>Intelligent Transportation Systems (ITS) Architecture</u> TPC approval in June 2017
<u>Congestion Mitigation Process (CMP)</u> TPC approval in July 2018 *	<u>Performance Management Plan (PMP)</u> Updated in April 2022 *
<u>Coordinated Human Services Transportation Plan (Coordinated Plan)</u> TPC approval in October 2024	<u>Regional Freight Mobility Study & Freight Design Guide</u> TPC approval in February 2019
<u>Environmental Justice (EJ) Guide</u> Updated in January 2022	<u>Project Management Guidebook (PMG)</u> Adopted in May 2024

**Expected updates in 2025*



MPO Dedicated Funding Programs

- Congestion Mitigation and Air Quality (CMAQ) – [Indiana only](#)
 - Funds can be used for projects that reduce congestion and improve air quality in MPOs that are in nonattainment of the NAAQS for ozone and/or particulate matter OR in former nonattainment areas that are now in compliance (maintenance areas).
- Highway Safety Improvement Program (HSIP) – [Indiana only](#)
 - Funds can be used to help achieve a significant reduction in traffic fatalities and serious injuries including safety improvements at intersections, railway-highway grade crossings, traffic calming measures as well as installing/upgrading traffic control devices.
- Surface Transportation Block Grant (STBG) – Indiana and Kentucky
 - Funds are extremely flexible and can be used to improve a wide range of project types including roadways, transit, bike/ped and intelligent transportation systems.
- Transportation Alternatives (TA) – Indiana and Kentucky
 - Funds can be used for a variety of bicycle and pedestrian focused projects.





MPO Dedicated Funding Programs

- Carbon Reduction Program (CRP) – Indiana and Kentucky
 - Essentially CMAQ for everyone
 - No CRP funds have been obligated yet
- Promoting Resilient Operations for Transformative, Efficient, and Cost-saving Transportation Program (PROTECT) – [Indiana only](#)
 - Funds to be used ensure surface transportation resilience to natural hazards



FY 25 Allocation of MPO Dedicated Programs

Program	Indiana	Kentucky
CMAQ	\$719,815	N/A
HSIP	\$447,998	N/A
STBG	\$3,694,172	\$23,112,971
TA	\$513,587	\$2,394,758
CRP	\$447,998	\$2,740,941
PROTECT	\$162,961	N/A

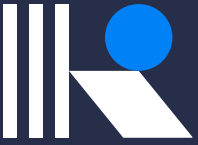
Managing MPO Dedicated Funds

- KIPDA Project Management Guidebook (updated May 2024)
 - Clarifies requirements and procedures, while increasing transparency and accountability
 - The guidebook and related resources can be found on the TIP webpage
- Call for Projects
 - Typically conducted every 2-3 years
 - Last one was in late 2022 (KY funds programmed through FY 2027/Indiana through FY 2029)
 - Next call is currently being scheduled (funds available in both states)
- Cost Increases
 - IN: Sporadically available for all MPO dedicated programs
 - KY: Always available for STBG projects; sometimes available for TA projects
- Phase Shifts (when a project is delayed)
 - IN: Very complicated with no funding guarantees due to INDOT's carryover rules
 - KY: Allowed, but with some internal restrictions



Transportation Funding Topics

- Highway Trust Fund = Primary source of funding for roadway projects (incl. bike/ped)
 - KY Tax on Gasoline = \$0.287/gallon
 - Federal Tax on Gasoline = \$0.184/gallon
- Virtually all large projects receive federal funding
 - 80%(federal) / 20% (non-federal)
- Formula Funds vs Discretionary Grants
 - Dozens of new grant programs in IIJA/BIL
- Transit funding
 - Mass Transit Trust Fund/Ridership/Fiscal Cliff



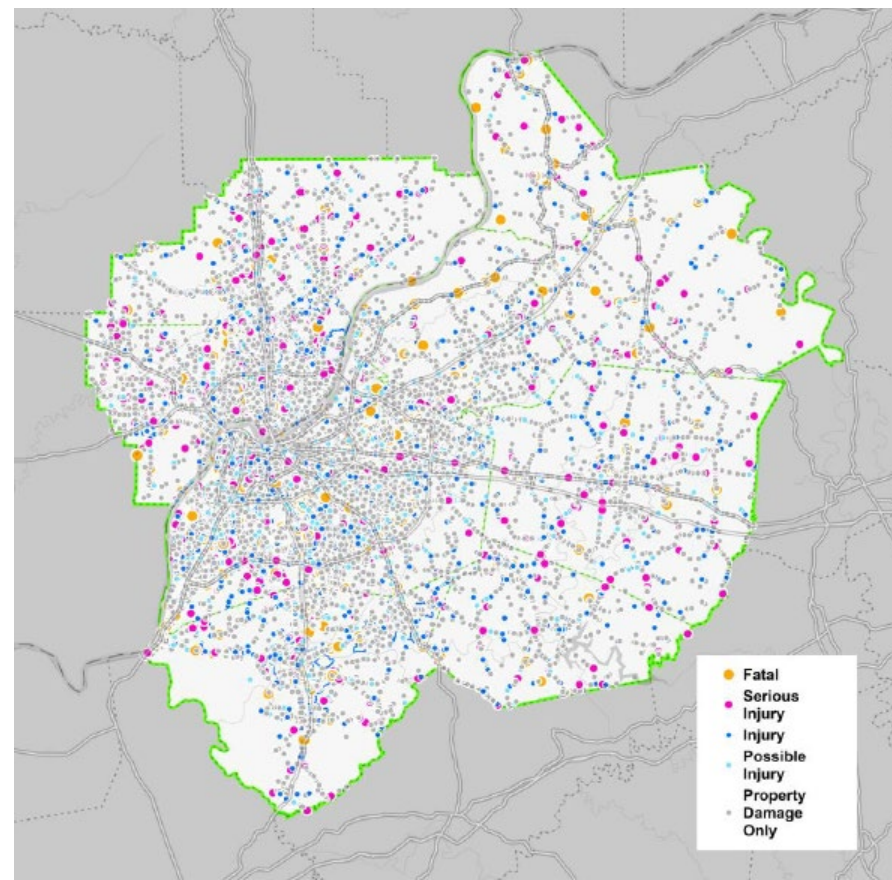


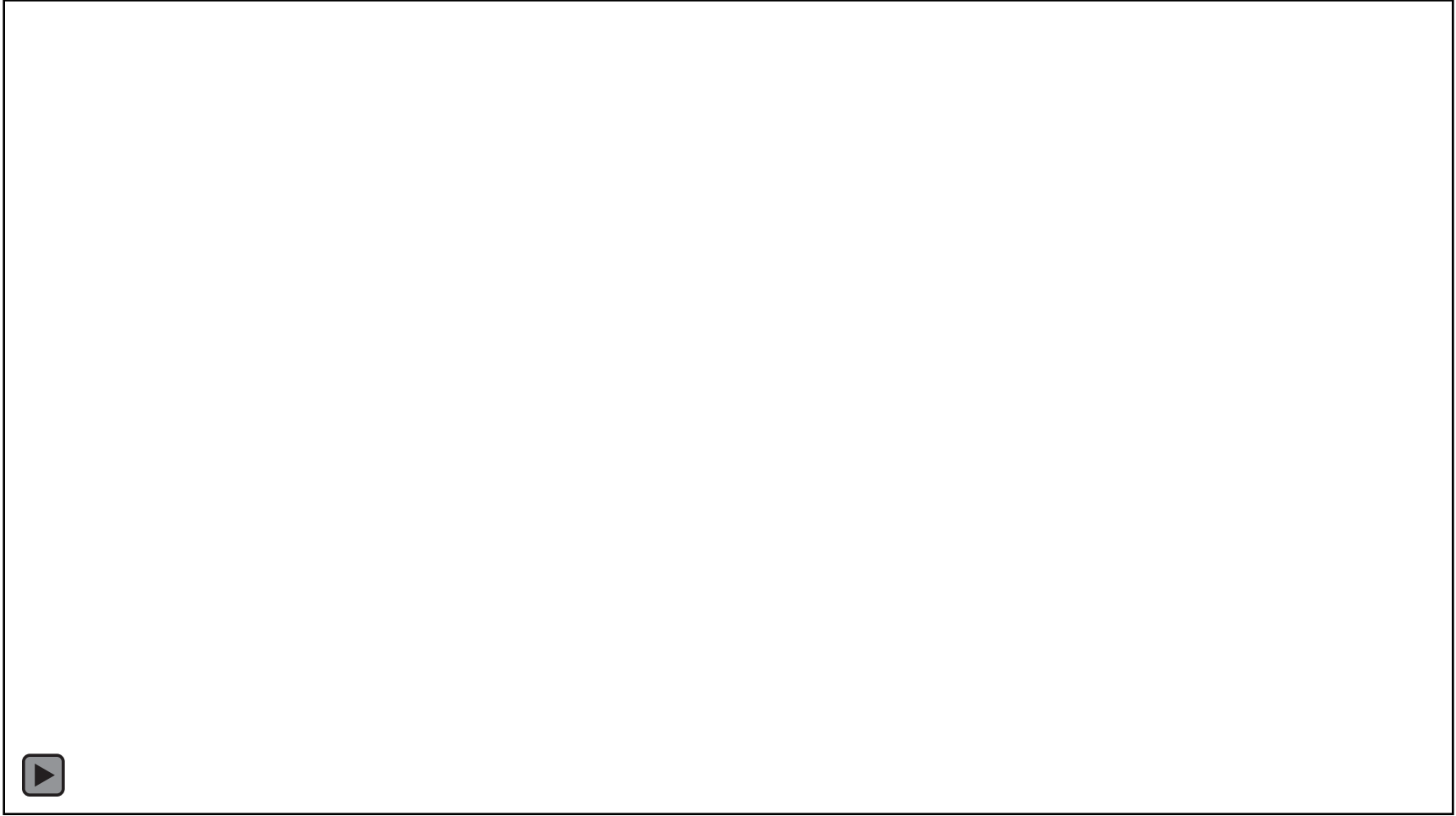
Safe Streets and Roads for All (SS4A)



On the Road to Safety, Every Life Counts

- \$750K Regional Action Planning Grant
 - \$600K Federal / \$150K Local
- All nine KIPDA Counties
 - Two states
 - Rural and Urban
- 17 Plans
 - 1 Regional
 - 16 Local
- Reactive and Proactive Analysis
- Implementation grant eligibility upon completion
- Public Outreach Currently Ongoing





Every Commute Counts Regional Rideshare Program



Dedicated to reducing the single occupancy driver.
When it comes to your daily commute, you have choices.

ECC provides efficient transportation solutions that are better for our
community & ourselves

www.everycommutecounts.org

ECC Key Programs:

Ride Matching: Connecting commuters living and working in
similar areas so they can rideshare easily via personal vehicles

Vanpool: ECC assists employers & employees in coordination
and formation of 8-12-15 passenger vans for daily commutes;
Registered vanpool participants pay monthly fare & are eligible for pre-tax
deduction; Vanpool Driver(s) are part of the group

Emergency Ride Home: Available to *registered* carpoolers, vanpoolers, bikers,
TARC riders; Covers emergencies such as: illness, sick child, family crisis,
unplanned overtime. Uber/Lyft fares will be reimbursed 100% for trips up
to 100 miles one way

