

2023 ANNUAL REPORT



Bullitt, Henry, Jefferson, Oldham, Shelby, Spencer and Trimble Counties in Kentucky
Clark and Floyd Counties in Indiana

January 2024

www.kipda.org
www.kipdaceds.org
www.kipdahmp.org

TABLE OF CONTENTS

1 *Introduction*

- 1 Board of Directors
- 2 Letter from Executive Director
- 3 Region Overview
- 4 What is KIPDA?
- 5 Public Engagement

6 *Financial Report*

- 6 Funding Breakdown and Expenses
- 7 Revenue

8 *Social Services*

- 8 Programs
- 11 2023 By The Numbers
- 12 Events and Outreach

13 *Community & Economic Development*

- 13 Programs
- 14 2023 By The Numbers
- 15 Reports
- 17 Community Highlights

18 *Transportation*

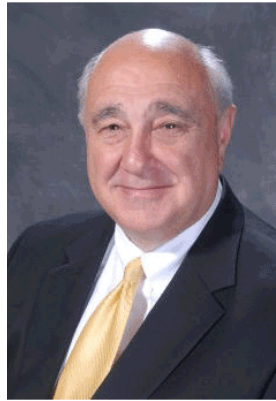
- 18 Funding
- 19 Updates
- 20 Events and Outreach
- 21 Rideshare
- 22 GIS

INTRODUCTION

2023 Board of Directors



SHELBY COUNTY
JUDGE DAN ISON
2023 CHAIRMAN



OLDHAM COUNTY
JUDGE DAVID VOEGELE
2022 CHAIRMAN



CITY OF ST. MATTHEWS
BERNARD BOWLING JR.
2023 VICE CHAIRMAN



CLARK COUNTY
JACK COFFMAN
2023 SECRETARY/
TREASURER

Bullitt County, KY
Judge Executive Jerry Summers
Keith Griffie, Chief Financial Officer

Clark County, IN
Kevin Baity, Town Manager of Clarksville
Jack Coffman, President, Clark Co. Board of Commissioners
Treva Hodges, Mayor of Charlestown
Michael Moore, Mayor of Jeffersonville

Floyd County, IN
Jeff Gahan, Mayor of New Albany
Tim Kamer, Floyd County Commissioner

Henry County, KY
Judge Executive Scott Bates

Jefferson County, KY
Craig Greenberg, Mayor of Louisville
Bernard Bowling, City of St. Matthews

Jefferson County, KY
Maria D. Johnson, Mayor of Shively
Carol Pike, Mayor of Jeffersontown
Byron Chapman, Mayor of Middletown

Oldham County, KY
Judge Executive David Voegele
John Black, Mayor of La Grange

Shelby County, KY
Judge Executive Dan Ison
Troy Ethington, Mayor of Shelbyville

Spencer County, KY
Judge Executive Scott Travis
Jim Travis, Magistrate

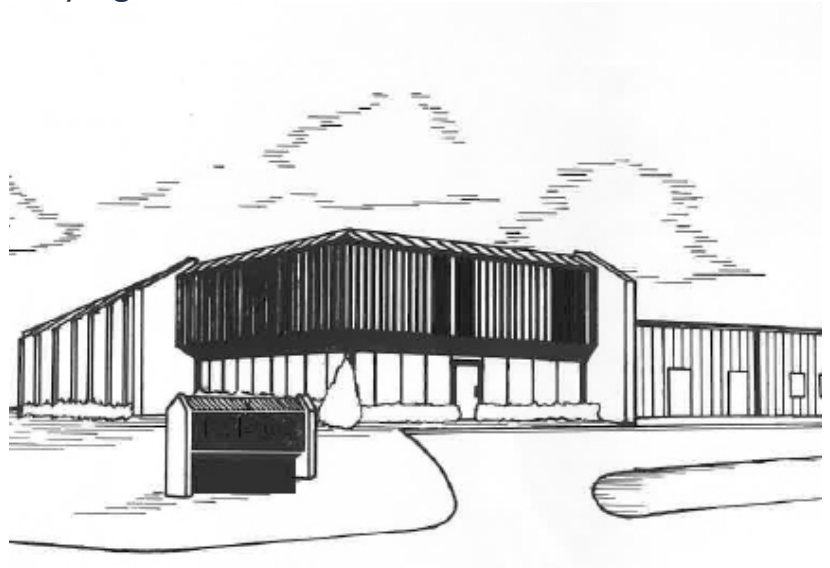
Trimble County, KY
Judge Executive John Ogburn
Diana Arnold, Trimble County Planning & Zoning

KIPDA 50th Anniversary

Letter from the Executive Director

November 1, 2023 marked a significant milestone for our agency as we celebrated KIPDA's Golden Anniversary – 50 years of service to our nine county region.

Many of the agency's accomplishments are visible in the roads, bridges, parks, water/wastewater infrastructure, and other capital projects across the 135 communities we serve. While not as visible, yet critically important to the success of our region, KIPDA staff have provided the necessary services for tens of thousands of our aging and vulnerable community members to assure they have the supports to remain in their homes and age in place.



As I look back on the year, I am reminded of the many successes and achievements of the agency, highlights include:

- Hosting a roundtable discussion with the United States Assistant Secretary of Commerce for Economic Development, Alejandra Y. Castillo, with industry leaders to discuss EDA's Regional Technology and Innovation Hubs program.
- Working with leaders in Bullitt County to secure and leverage over \$3 million to provide 37 homes with access to potable water for the first time.
- Securing a \$500,000 planning grant from the Federal Railroad Administration to assess the viability of re-establishing passenger rail connecting Louisville to Indianapolis.
- Provided 431,298 meals to older adults 60 and over through our senior nutrition program.
- Services to 386 individuals in the Participant Directed Services Waiver Program resulting in an estimated annual savings to Medicaid of \$25.8 million.

These accomplishments were not achieved alone, we thank all our partners who have contributed including the strong leadership and support provided by our federal, state, and local officials.

I want to recognize the effort of Shelby County Judge Executive Dan Ison who served as the KIPDA Board of Directors' Chairperson in 2023 and was always available to provide guidance and support. He along with other members of the KIPDA Board of Directors are committed to improving the quality of life not only in their areas, but in their neighboring communities.

Finally, I want to offer my sincere gratitude to every KIPDA employee for their contributions to our agency and in service to the region. It is an honor to serve alongside such a dedicated group of professionals.

I am excited to see what KIPDA can achieve in the next 50 years!

Farrett Haley

Mission Statement

Working in partnership with state and local governments, we encourage the growth of our region by providing resources to help people in Kentuckiana thrive. We strengthen mobility, quality of life, and economic opportunity for all community members by supporting local officials, older adults, those with disabilities, and their caretakers.



1.2 M
Population



126
Cities



9
Counties



INTRODUCTION

What is KIPDA?

Area Agency on Aging & Independent Living

The state has designated KIPDA as an Area Agency on Aging and Independent Living (AAAIL). As an AAAIL, KIPDA addresses the needs of older persons and those with disabilities, their caregivers and many more at the regional level.



Kentucky counties of Bullitt, Henry, Jefferson, Oldham, Shelby, Spencer and Trimble.

Area Development District

KIPDA is one of fifteen Area Development Districts (ADD) in KY. As an ADD, KIPDA represents the multi-county planning districts and provides critical resources to local counties and cities.



Kentucky counties of Bullitt, Henry, Jefferson, Oldham, Shelby, Spencer and Trimble.

Metropolitan Planning Organization

KIPDA serves as the Metropolitan Planning Organization for Greater Louisville. As an MPO, KIPDA is the designated decision-making body that is responsible for carrying out the metropolitan transportation planning process as defined by the current Federal Transportation Act.



Kentucky counties of Bullitt, Jefferson, and Oldham. Indiana Counties of Clark and Floyd.

INTRODUCTION

Public Engagement

KIPDA continues to increase awareness, education, and public feedback through several channels including social media, events, and committee meetings. KIPDA has social media pages on [Facebook](#), [Twitter](#), [Instagram](#), and [LinkedIn](#). To combat the digital divide, KIPDA takes advantage by attending events in the communities to be forward facing with the public. Committee meetings are live streamed and published on KIPDA's [YouTube](#) channel. Below are examples of public engagement throughout the year.

Transportation

KIPDA updated the Citizens Guide to Transportation Planning in the summer. This informational document can be found at events where KIPDA is present. It provides links and details on how the public can get involved and stay engaged in the transportation planning process. KIPDA's transportation committees, the [Transportation Technical Coordinating Committee](#), and the [Transportation Policy Committee](#) meetings are live-streamed over KIPDA's [YouTube channel](#) and via Zoom Webinar as well as held in person. This ensures the public has adequate access to participate no matter where they are in the KIPDA region.



Community & Economic Development

KIPDA CED staff held public meetings for six CDBG projects, one Land and Water Conservation Fund project, one Recreational Trails Program project, and the Shepherdsville Wastewater Treatment Plant expansion project. A public comment period was also open for the Comprehensive Economic Development Strategy. This was advertised on social media, in the KIPDA newsletter, and through the KIPDA Radio Show.



Social Services

KIPDA Social Services staff attended numerous events throughout 2023 to provide outreach, health promotion, and education about programs offered to residents of all ages in our region. These included WorldFest, Fan Fair, Vaccine Clinics, Fall Festivals, Waterfront Wednesdays, Back to School Events, and the KY State Fair.

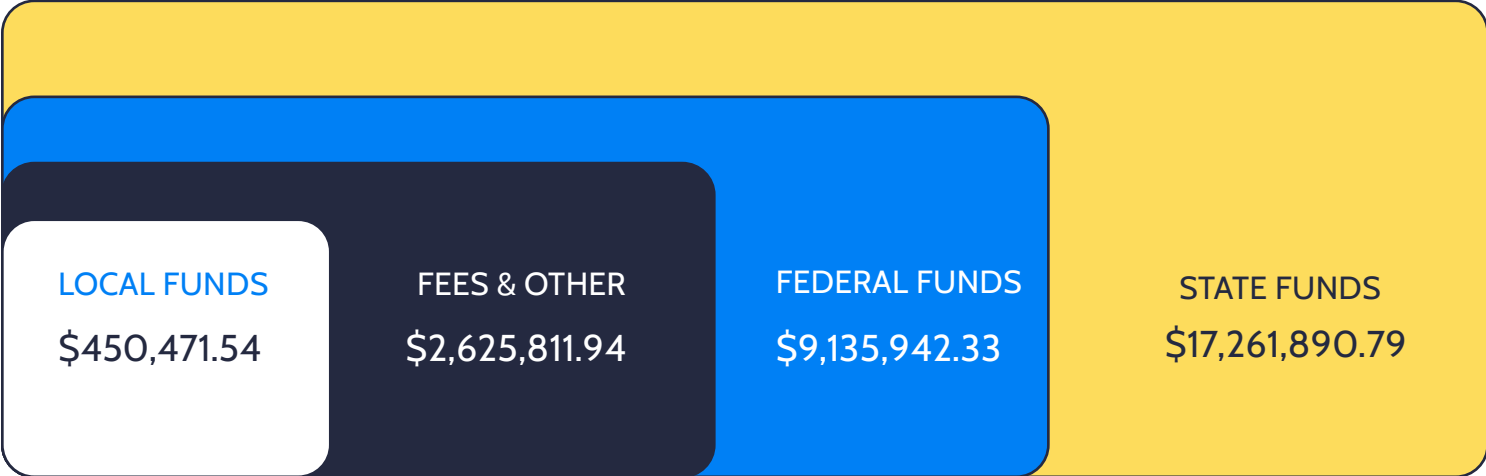


FINANCIAL REPORT

Fiscal Year 2023 Expenses



2023 Funding Breakdown



FINANCIAL REPORT

Fiscal Year 2023 Revenue

Organization	Amount	Percentage
Medicaid	12,256,431.30	41.58%
KY Dept for Aging & Independent Living	9,367,790.26	31.78%
KY Transportation Cabinet	2,142,229.78	7.27%
IN Dept of Transportation	1,040,168.72	3.53%
KY Health Benefit Exchange	927,020.82	3.15%
Fees	1,635,273.87	5.55%
Member Dues	244,567.90	0.83%
KY Dept for Local Government	487,385.65	1.65%
Contract Work	391,509.34	1.33%
Miscellaneous Revenues	981,738.96	3.33%
Total	29,474,116.60	100.00%

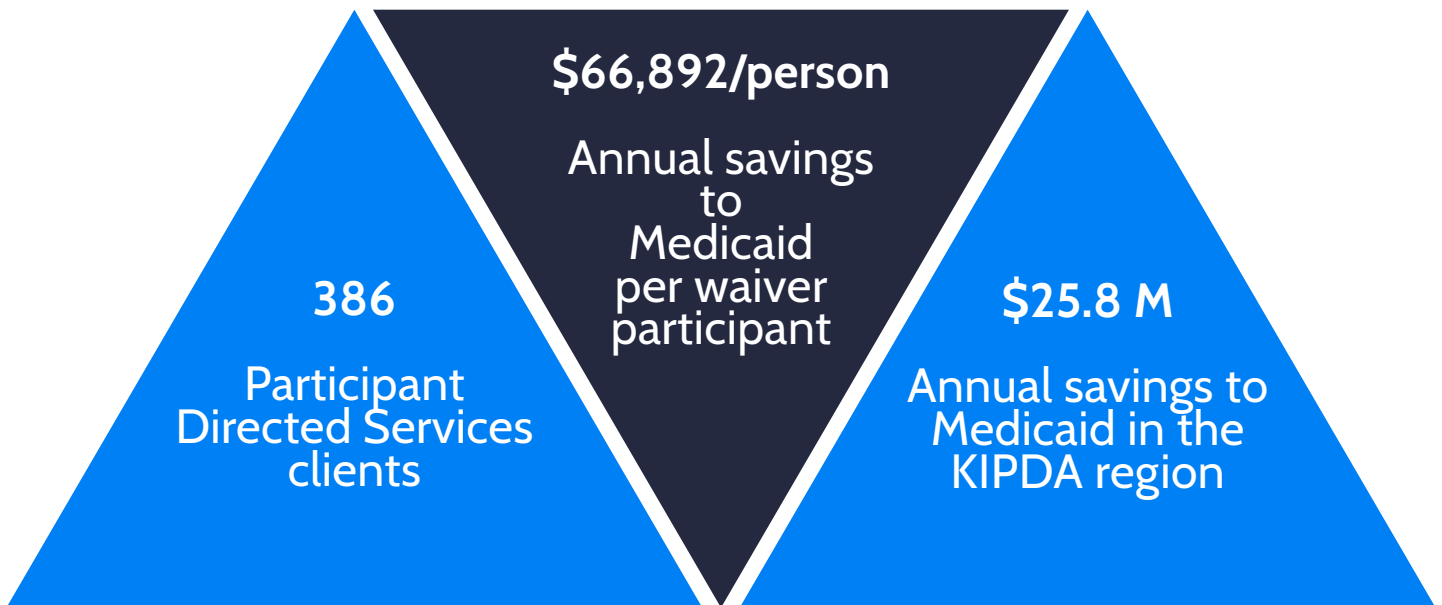
SOCIAL SERVICES

Programs

Medicaid Waiver

The Participant Directed Services (PDS) Waiver Program has been provided by KIPDA since 2006. The PDS Waiver program is for persons who are aging, have developmental or intellectual challenges, have physical disabilities, or who are otherwise unable to care for themselves independently in their home and community.

Home and Community Based Medicaid Waiver services such as PDS make it possible for individuals to remain in their home and community and empowers them to make decisions about their care and services they receive.



SOCIAL SERVICES

Programs

National Family Caregiver Program

9,414

Contacts

KIPDA provides many services through the National Family Caregiver Program: individual counseling, support groups, caregiver training, respite care, legal assistance, and information services. This program also provides vouchers for supplies. KIPDA answers thousands of calls from caregivers yearly and assists clients in multiple ways.

In-Home Services

405

Clients

The Homecare program helps persons aged 60 and over to remain in their home and avoid premature placement in long-term facilities by providing case management, personal care, respite, and supplies.

Transportation Services

13,619

Non-Emergency Medical & Center Trips

KIPDA's Transportation program supports clients by providing transportation to medical appointments and senior centers.



SOCIAL SERVICES

Programs

kynector Program

19,056

Received Assistance

The kynector Program is comprised of health insurance Navigators throughout the community to assist individuals with enrollment into plans located on the KY Health Benefit Exchange.

Senior Centers

22,193

Supportive Services Clients

KIPDA funded senior centers provide a wide range of supportive services that enhance quality of life and promote healthy, positive, and active aging. General services include advocacy, counseling, education, health and wellness programs, telephone reassurance, and more.

Nutrition Services

431,298

Meals Served

The nutrition program provides balanced meals to individuals 60 years of age and older. In 2023, the network of providers served 326,107 home delivered meals and 105,191 congregate meals.

State Health Insurance Program

4,659

Contacts

SHIP counselors provide educational assistance and counseling to an individual or their caregiver for Medicare enrollment and plan comparisons.

SOCIAL SERVICES

2023 By the Numbers

AGING

TRANSPORTATION CENTER TRIPS	10,250
TOTAL TRANSPORTATION CLIENTS	314
TOTAL HOME DELIVERED MEALS	326,107
TOTAL CONGREGATE MEALS	105,191
AGING & DISABILITY RESOURCE CENTER SERVED	3,285
PARTICIPANT DIRECTED SERVICES CLIENTS	386
HOMECARE CASE MANAGED	366
STATE HEALTH INSURANCE ASSISTANCE PROGRAM	4,659

KYNECT

APPLICATIONS COMPLETED	19,056
TOTAL COMMUNITY EVENTS ATTENDED	946

SOCIAL SERVICES

Events and Outreach

Staff attended numerous events throughout 2023 to educate the community on available social services programs. In total, Social Services staff attended over 950 community events throughout the region.



KY State Fair



Americana GlobalLou Festival



DAIL Aging & SHIP Conference



Aging Well in KY Health Fair



kynect 10th Anniversary Celebration



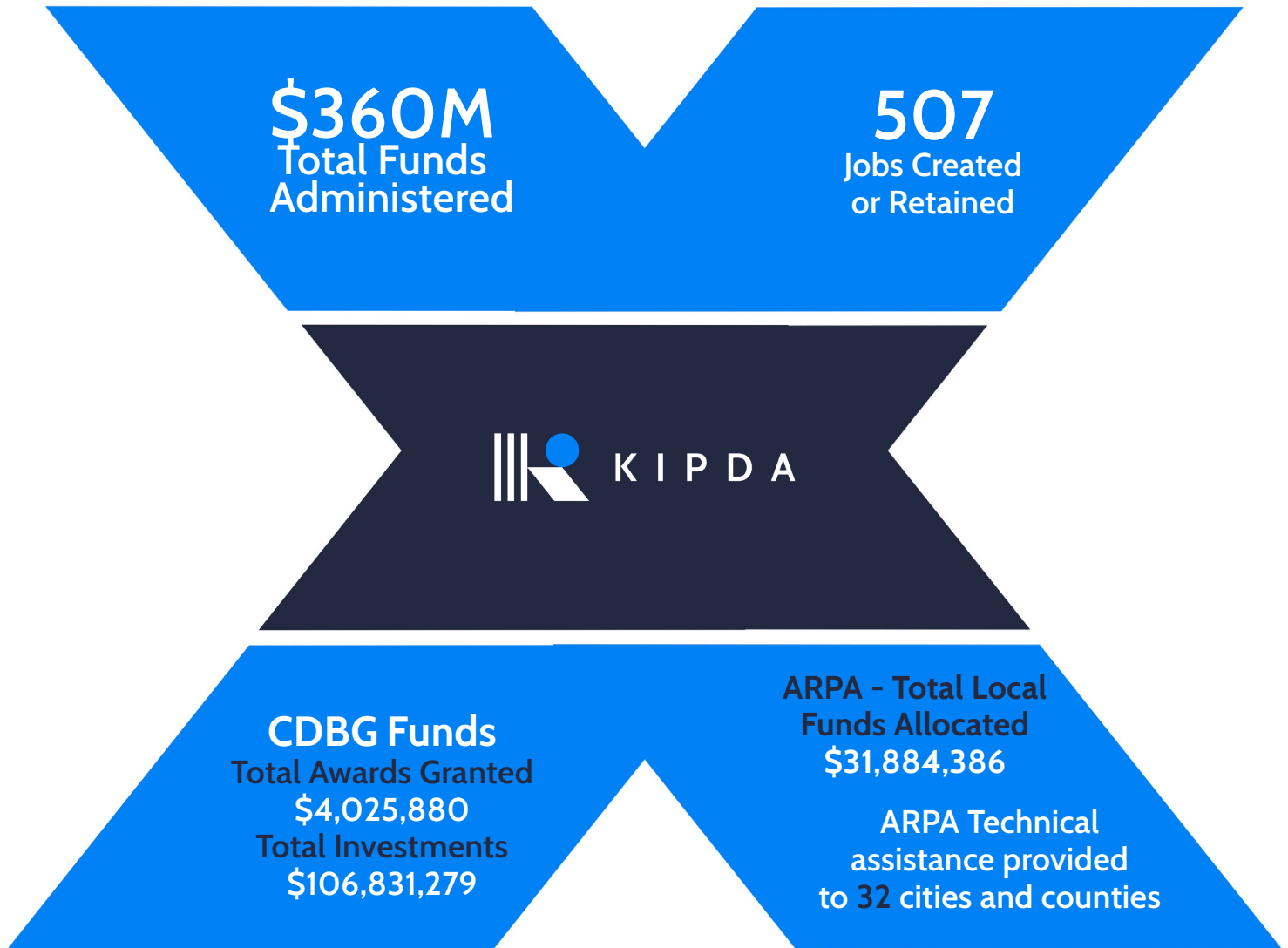
Fan Fair 2023



Breast Cancer Walk

COMMUNITY & ECONOMIC DEVELOPMENT

Programs



CED Services Provided

- ◆ Planning and zoning assistance
- ◆ Technical expertise
- ◆ Education and training
- ◆ Grant assistance
- ◆ Broadband
- ◆ Community and economic development
- ◆ Hazard mitigation
- ◆ Water and wastewater project administration

2023 By the Numbers



COMMUNITY & ECONOMIC DEVELOPMENT

Reports



Comprehensive Economic Development Strategy

The Comprehensive Economic Development Strategy was prepared for 2023-2027 with input from local leaders, stakeholders, and public comment. The CEDS is a part of a continuing economic development planning process aimed at providing an analysis of KIPDA's economic successes and opportunities.

Trimble County Revenue Study

KIPDA prepared a study that summarizes Trimble County's current sources of revenue, presents additional potential sources of tax and other revenue, and makes recommendations for promising sources.



Executive Summary

This revenue study identifies current and potential sources of revenue and, of the potential sources, recommends promising additional revenue sources for Trimble County.

Kentucky county revenue comes from local taxes, intergovernmental assistance, and governmental operations. Trimble County's current local taxes include the following:

- insurance premium tax
- off-innate water license tax
- property tax
- public service cooperative property tax
- unimproved mineral property tax
- real estate transfer tax
- financial institution franchise tax
- 9% surcharge and
- forced fire protection tax

Trimble County does not appear to have the following major local taxes:

- occupational license taxes - general
- occupational license taxes - retail
- unmanufactured agricultural products
- taxes for specific purposes
- alcoholic beverage license fees and taxes for public service programs

This study concludes with recommendations for additional sources of revenue, including:

- considering the possibility of increasing the property tax rate or other existing taxes
- updating the 9% surcharge
- establishing new taxes for specific programs or purposes
- forming one or more special taxing districts to provide certain services; and
- seeking new federal and state grant funding.

For a list of the sources used to prepare this study, please contact Jennifer Wilson, Economic Resiliency Planner, at jwilson@kipda.org.

The date of this revenue study is June 29, 2023.

11520 Commonwealth Drive
Louisville, KY 40299
www.kipda.org

Phone: 502.266.4084
Fax: 502.266.5047
TDD: 800.648.4056




Overview

Question: How much tax revenue would be generated if Trimble County established a fire protection district with emergency ambulance service?

Short Answer: Assuming that it is possible to establish a county-wide EMS Chapter 75 fire protection district with emergency ambulance service and that all agreements can be obtained, the maximum estimated hypothetical tax revenues based on 1922 certified property values and estimated public service company property values, assuming 100% collection, would be as follows:

Proposed Rate (per \$100 of valuation)	Resulting Estimated Tax Revenue
\$0.05	\$149,137
\$0.10	\$298,274
\$0.15	\$447,411
\$0.20 (maximum)	\$596,548

Analysis: Below is an analysis consisting of the following:

- a description of Trimble County's current fire protection services;
- a summary of the legal requirements applicable to the protection districts and issues that could affect establishment in Trimble County;
- an estimate of hypothetical tax revenues a fire protection district could generate; and
- a discussion of advantages and disadvantages of establishing a fire protection district and one alternative, an emergency ambulance service district.

An emergency ambulance service district may be simpler to establish and pose fewer issues. It can impose a tax of up to \$0.20 per \$100 of valuation and also charge service fees.

Sources: This analysis was based on publicly available sources, including Trimble County's annual report to Kentucky Department for Local Government (DLG), the schedule of Statewide Certified Property Values published by the Kentucky Department of Revenue (KDOR), and information reported by special purpose governmental entities (SPGE) to DLG.

Contact: For a list of sources used to prepare this analysis, please contact Jennifer Wilson, Economic Resiliency Planner, at jwilson@kipda.org.

11520 Commonwealth Drive
Louisville, KY 40299
www.kipda.org

Phone: 502.266.4084
Fax: 502.266.5047
TDD: 800.648.4056



Trimble County Fire District Analysis

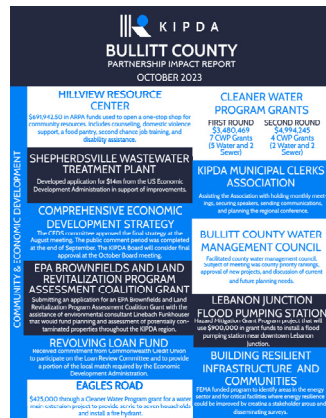
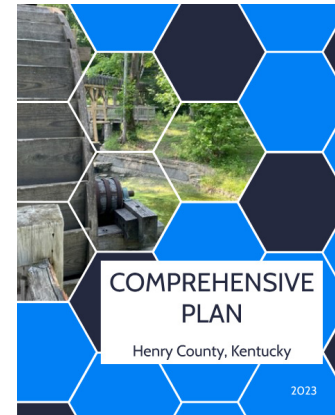
KIPDA prepared an analysis that summarizes the current fire protection services covering Trimble County, presents the steps necessary to form one or more fire protection districts with emergency ambulance service, estimates revenue that may be generated, and discusses the advantages and disadvantages of establishing such a district.

COMMUNITY & ECONOMIC DEVELOPMENT

Reports

Henry County Comprehensive Plan

KIPDA staff is preparing an update to the Henry County Comprehensive Plan. This update fulfills the Planning Commission's statutory duty to review and amend the plan every five years. The Comprehensive Plan serves as a guide for public and private actions and decisions to assure the appropriate development of public and private property. It outlines the vision and goals the county hopes to achieve over the next decades and is vital to how the county plans to guide its future growth and development, particularly in the areas of land use, transportation, and community facilities. It contains a wealth of data about the county's population and economy as well as numerous maps to help the Planning Commission assess and guide development.



Quarterly Impact Reports

KIPDA prepared quarterly impact reports highlighting work that is being conducted for each county by each KIPDA division.

Trimble County Tourist and Convention Commission and Transient Room Tax Overview

KIPDA prepared an overview of tourism commissions and the transient room (motel) tax for Trimble County. The overview included an outline of the requirements to establish and maintain the commission and impose and enforce the tax, a comparison of practices in local and peer counties, and recommendations for the county. In addition, staff prepared forms of ordinance and resolutions for the county to proceed if interested.



A tax on the use of motel rooms and other accommodations is known as a transient room tax. Kentucky imposes a statewide transient room tax of 1%. Imposing a county transient room tax requires the establishment of a tourist and convention commission. This overview (1) outlines the legal requirements for establishing a commission and imposing the tax, (2) lists the powers of other counties, and (3) presents recommendations for the county.

This overview is not exhaustive; applicable statutes should be reviewed in their entirety and the county attorney should be consulted with respect to all legal questions. Please contact Jennifer Wilson, Economic Recovery Planner at jwilson@kentucky.gov with any questions.

III Outline of Legal Requirements

The requirements for establishing a tourist and convention commission and imposing a transient room tax are listed below as based on the provisions of Kentucky Revised Statutes (KRS) 9A.341 to 9A.374 (see Appendix 1) that apply to counties containing home rule class cities only and not to counties containing first class cities, consolidated local governments, urban-county governments, or cities alone.

TOURIST AND CONVENTION COMMISSION

Purpose: Tourist and convention commissions may be established for the purpose of promoting and developing convention and tourist activities and facilities.

Establishment: Tourist and convention commissions may be established by —

- a county separately;
- a county and the cities in the county jointly (this requires an interlocal agreement); or
- two or more counties jointly (see covered in this Overview).

County Responsibilities: Counties have certain responsibilities —

- The local court must include the commission in the annual budget.
- The local court must provide funds for the operation of the commission by imposing a transient room tax.
- The county administrator must appear before the commission annually 30 days or more of the commission's meeting.
- The local court may issue revenue bonds for public projects.

In the case of joint commissions, city governing bodies and officials have similar duties.

11220 Commonwealth Drive
Louisville, KY 40299
Phone: 502.244.4054
Fax: 502.244.4047
TDD: 502.648.4056

COMMUNITY & ECONOMIC DEVELOPMENT

Community Highlights

Elderserve Adult Day Center CDBG-CV Project

Elderserve offers a holistic approach to senior health and wellness which supports aging adults ranging from medically fragile to healthy and active. The project will renovate an unfinished 10,000 square foot space as a purpose-built medical model adult day care.

Funding: CDBG: \$ 1,000,000 Elderserve: \$50,000

Roe Hill Rd Area Water Main Extension & Pump Station Project

Louisville Water Company installed 12,040 feet of water main and a booster pump station to provide potable water to 37 unserved residences on Roe Hill Rd, Kerr Lane, P'Poole Lane, and Perkins Court in Bullitt County.

Funding: CDBG: \$537,850 SRF: \$537,850
ARPA: \$1,275,654 LWC: \$660,000

Bedford Wastewater Improvements Project

The project is replacing the three wastewater pump stations that are original to the wastewater system, which was constructed in the early 1980's.

Funding: SRF: \$909,500 CDBG: \$909,500
CWP: \$250,000

TRANSPORTATION

Funding

KIPDA serves as the Metropolitan Planning Organization (MPO) for Bullitt, Jefferson, Oldham, Clark and Floyd counties. The MPO is responsible for transportation planning in this area and all federal transportation projects therein must be included in the MPO's Metropolitan Transportation Plan (MTP) and the Transportation Improvement Program (TIP).

KIPDA also provides transportation planning services for the Kentucky Transportation Cabinet (KYTC) in the Area Development District (ADD) counties of Henry, Shelby, Spencer, and Trimble.



TIP Projects in Kentucky

\$132,710,887
Obligated Funding for Projects

Federal funds were identified in the MPO TIP and obligated by KYTC to advance 46 projects in Jefferson, Bullitt, and Oldham counties.

TIP Projects in Indiana

\$27,267,919
Obligated Funding for Projects

Federal funds were identified in the MPO TIP and obligated by INDOT to advance 29 projects in Clark and Floyd counties.



TIP Transit Projects in the Region

\$5,530,615
Obligated Funding for Projects

Federal funds were identified in the MPO TIP and obligated to advance 17 projects in Jefferson, Bullitt, Oldham counties in Kentucky and Clark and Floyd counties in Indiana.

TRANSPORTATION

Updates

SS4A GRANT PROGRAM

In February, KIPDA was awarded \$600,000 to significantly reduce roadway deaths and fatalities in the region with the Safe Streets and Roads for All grant. Funds are paired with a \$150,000 local match contributed by the sixteen participating jurisdictions.

CORE DOCUMENT PLANS

In May, two of KIPDA's core planning documents were adopted. The [FY 2023-2026 Transportation Improvement Program](#) and the [Connecting Kentuckiana 2050 Metropolitan Transportation Plan](#) handle the region's short and long-term planning projects and funding.

KITE AWARD

The 9th annual KIPDA Kentucky Indiana Transportation Excellence (KITE) Award went to the City of New Albany for the East Main Street Project. A road revitalization in the heart of downtown, this project encapsulates the complete streets concept with safety, accessibility, and socioeconomic considerations.

East Main Street now boasts bump outs for traffic calming measures and reduced width of crosswalks further minimizing the time pedestrians spend on the road. Additionally, reverse-angle parking facilities allow safer vehicle movement. The project also caters to all residents with ADA-compliant curb ramps at intersections and crosswalks. Watch all four nominated projects [here](#).

SHIFT

Provided local input to shape the next Kentucky state highway plan through The Strategic Highway Investment Formula for Tomorrow (SHIFT) process, sponsoring 69 projects and boosting scores on 27 projects throughout the region. The ADD boosted 9 projects with a total project cost of **\$90,274,000**. The MPO boosted 18 projects with a total project cost of **\$394,884,897**.

TRANSPORTATION

Passenger Rail Grant

KIPDA received a \$500,000 planning grant that will assess the viability of re-establishing passenger rail service connecting Louisville to Indianapolis.

Demonstrating added partnership, the Indiana Department of Transportation (INDOT) submitted a grant application through the same program for the corridor between Indianapolis to Chicago. Combined, these two corridors would make for a 313-mile route that would reconnect Louisville to Chicago and be the first intercity passenger rail operations in the Louisville region in decades.

Events and Outreach

KIPDA continued its ongoing outreach efforts for education and public communication through many events throughout the year. A partial list of events KIPDA attended are listed below:

- California Day (EJ area)
- Russell Place of Promise Neighborhood Canvassing (EJ area)
- St Matthews Business Expo
- Portland Promise Resource (EJ area)
- CycLOUvia (2)
- Galt House Employee Health Fair
- Crowne Plaza Employee Health Fair
- Waterfront Wednesday
- Tree Fest (EJ area)
- Jeffersontown Business Expo
- Middletown Chamber of Commerce Business Expo



TRANSPORTATION

Rideshare

The regional rideshare program known as Every Commute Counts promotes sustainability and helps reduce vehicle emissions. [Every Commute Counts](#) connects the public with resources and information about commuting options in Kentuckiana.

2,210
Participants

31
Vanpools

271
Work
Sites

\$367,000
Commuting
Savings

572
Tons of
Pollution
Reduced

1,467,357
Miles
Reduced

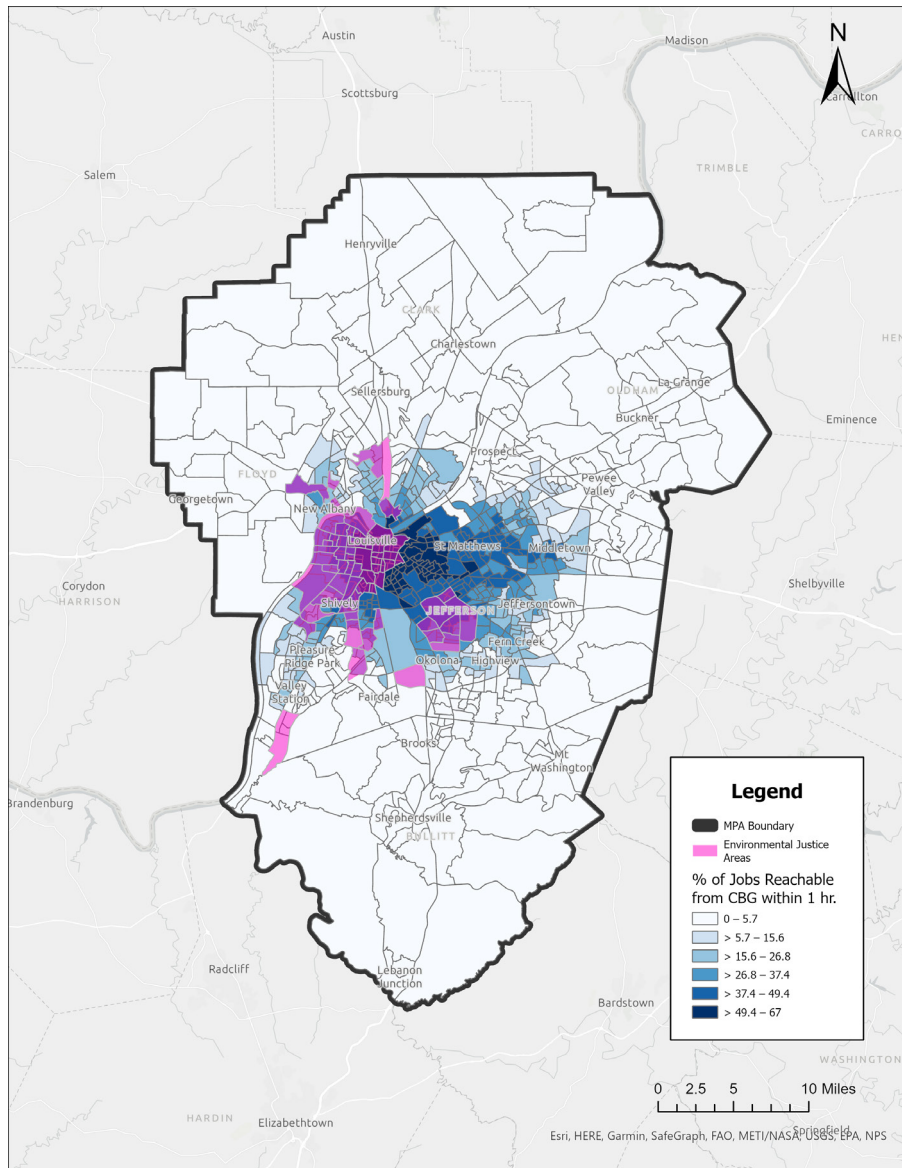


TRANSPORTATION

Geographic Information System

KIPDA has a dedicated staff of GIS professionals working to support the agency's spatial data needs and planning efforts with mapping, spatial analysis, inventories, and field data collection. The GIS staff also collects and corrects GPS data for various projects. The staff provides GIS technical assistance to the planning staff of all KIPDA divisions and the counties that make up the KIPDA region.

The GIS department took on the task earlier this year to assist in the update to the magisterial districts, voting precincts, and school districts for the KIPDA region. This work is expected to continue into next year. The CED division also purchased a drone near the end of last year for the GIS division and continues to fly it for projects.



KIPDA in the Community



KITE Award Winner



Aging Well Health Fair



CycLOUvia



Hillview Resource Center Opening



California Day 2023



Kentucky Main Street Program

KIPDA in the News

Work with KIPDA paying big dividends for county

By Thomas J. Barr, The Pioneer News Dec 4, 2023

Seniors, people with disabilities receive free fans at the annual Fan Fair

Jun 10, 2023 Updated Jun 10, 2023

Kentuckiana Regional Planning and Development Agency lands funding to explore Louisville to Indianapolis passenger rail

ElderServe gets \$1M to renovate Adult Day Health Center in Louisville's Russell neighborhood

Jun 12, 2023 Updated Jun 12, 2023

Court approves Magisterial Map

By Jeff Sopland The Spencer Magnet Aug 30, 2023 Updated Dec 5, 2023

New federal program 'Tech Hubs' could create jobs, boost economic development in Kentucky

Louisville wins \$21M Safe Streets and Roads for All Grant

February 01, 2023

THANK YOU TO THE SUPPORT OF OUR 2023 COMMITTEES

Aging & Disability Advisory Council

Comprehensive Economic Development Strategy Committee

Hazard Mitigation Committee

Regional Planning Council

Regional Transportation Council

Regional Water Management Council

Transportation Policy Committee

Transportation Technical Coordinating Committee